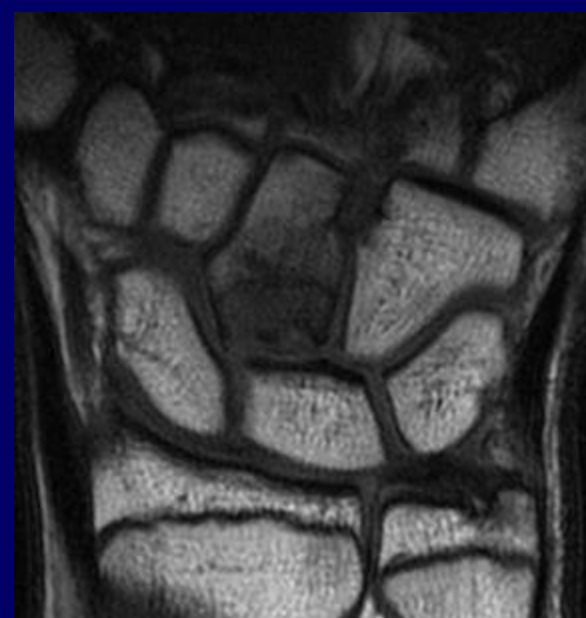
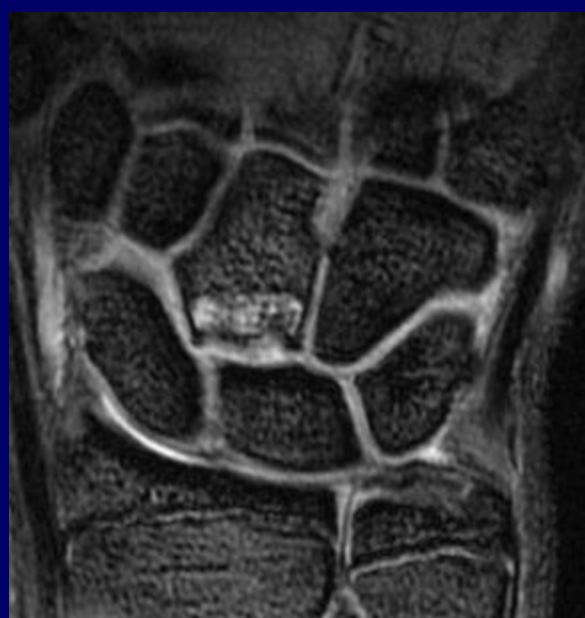


March 8, 2007

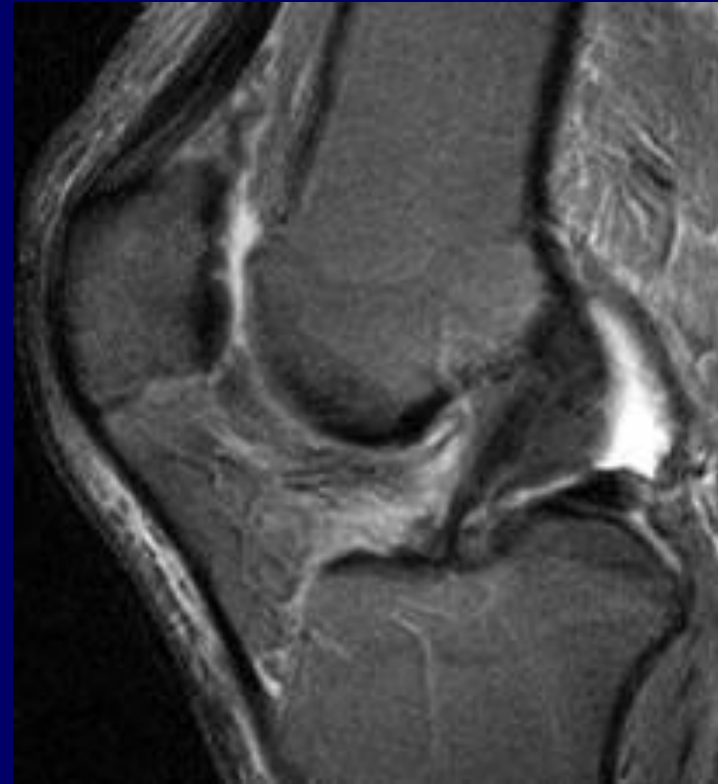
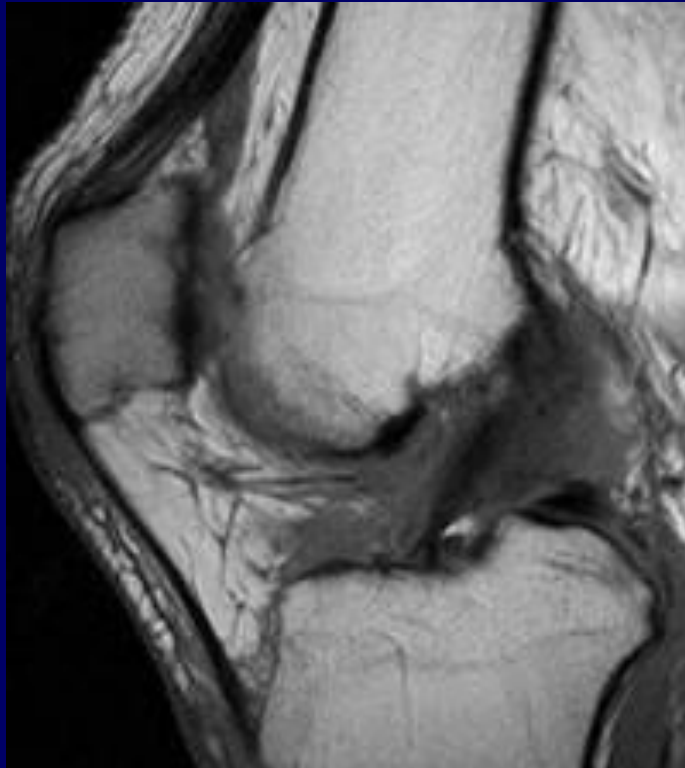
CASE

- I called this an osteochondral fx involving the proximal capitate with cyst formation. I actually talked to Christine about it and she said that there was a poster at RSNA on this talking about OC fx's of the capitate with AVN formation.



CASE

67 y.o male with pain and fullness medially for 3-4 weeks duration, exacerbated by increased running in exercise .



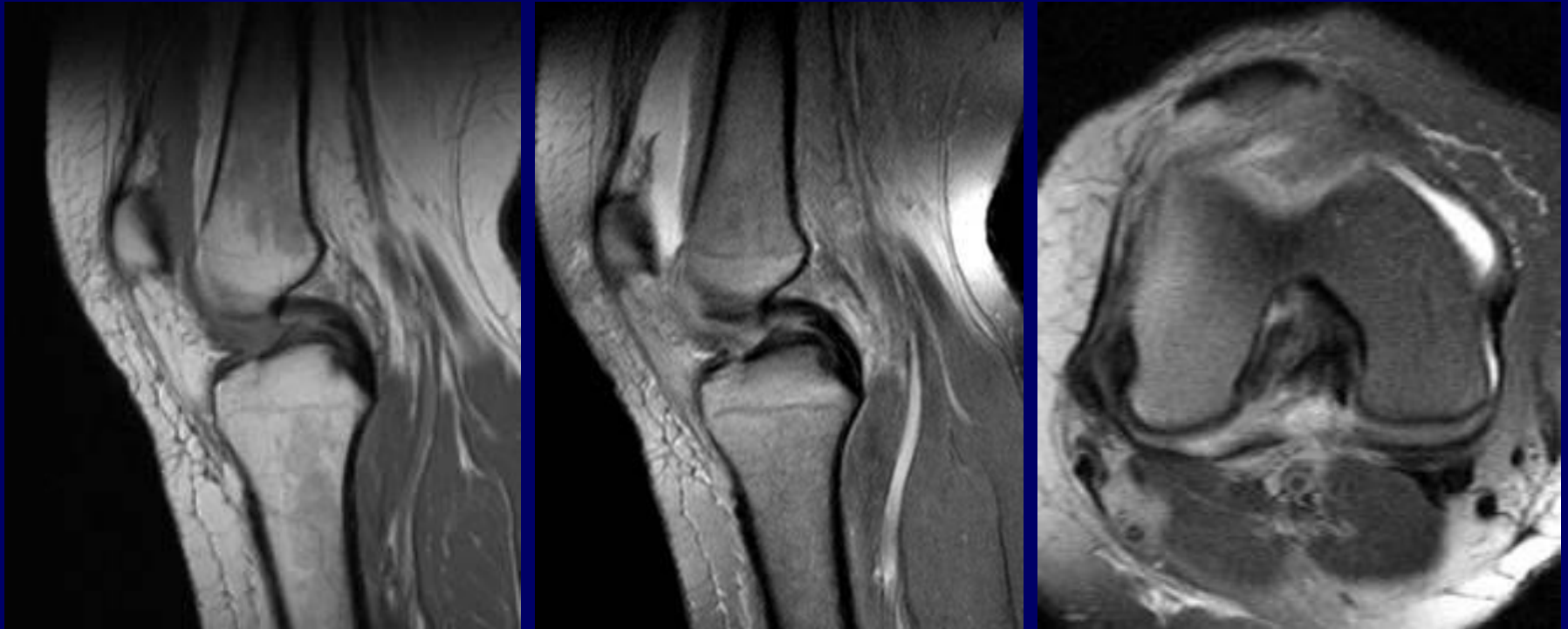
Findings: Edema in the deep part of Hoffa's fat pad.

Most likely: attributed to impingement of Hoffa's fat pad during full range of motion.

CASE

- 34yo F with R knee pain for 2 weeks. No specific injury. On exam, normal ROM from 0-90, but significant pain with knee flexion >90 degrees.

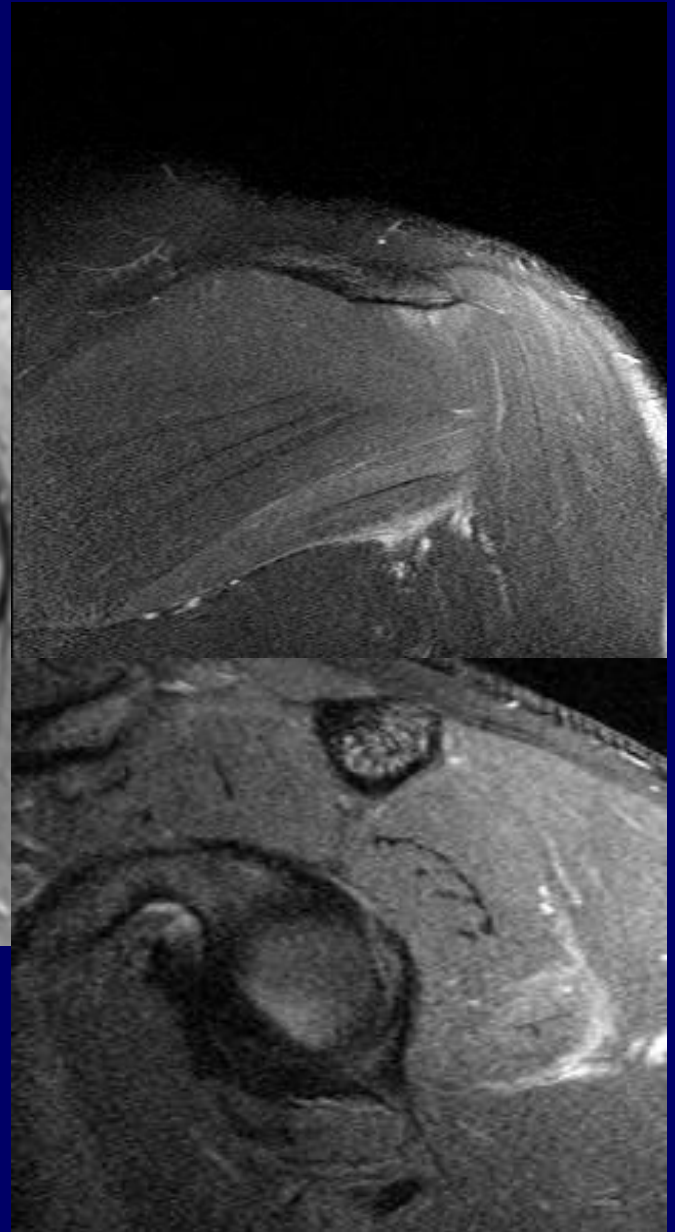
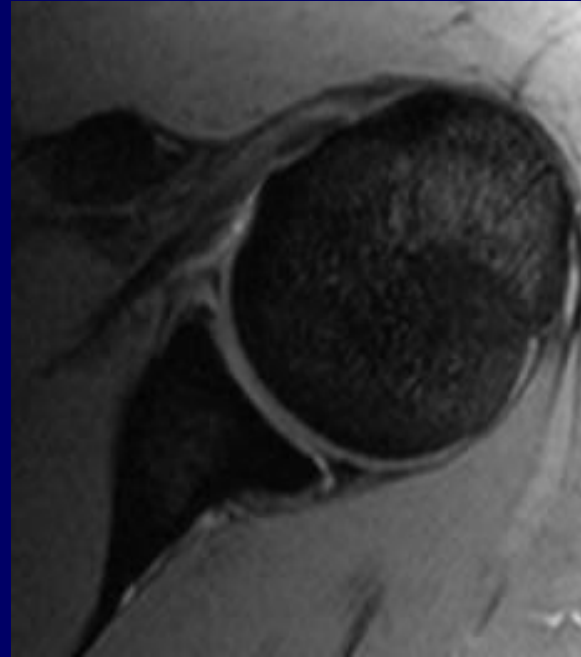
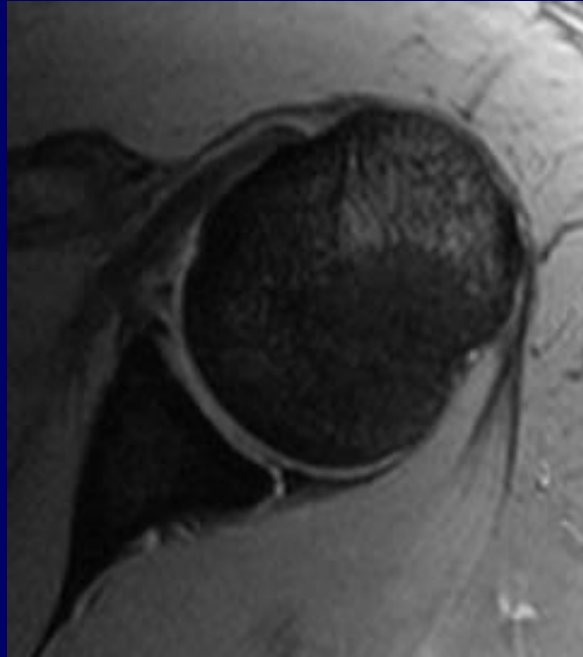
Pericruciate Inflammation



CASE

- 22yo M with L shoulder pain after "pop" while doing military press 4 weeks prior

POLPSA



CASE



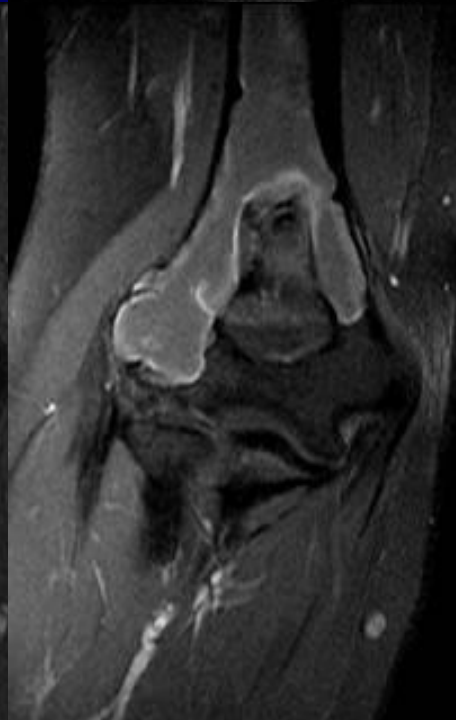
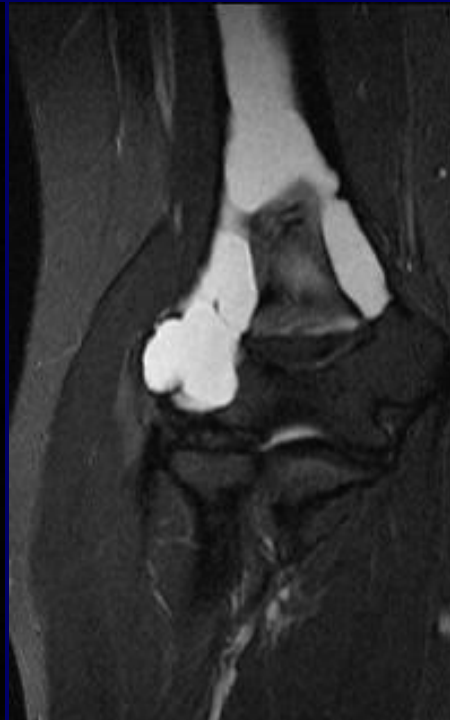
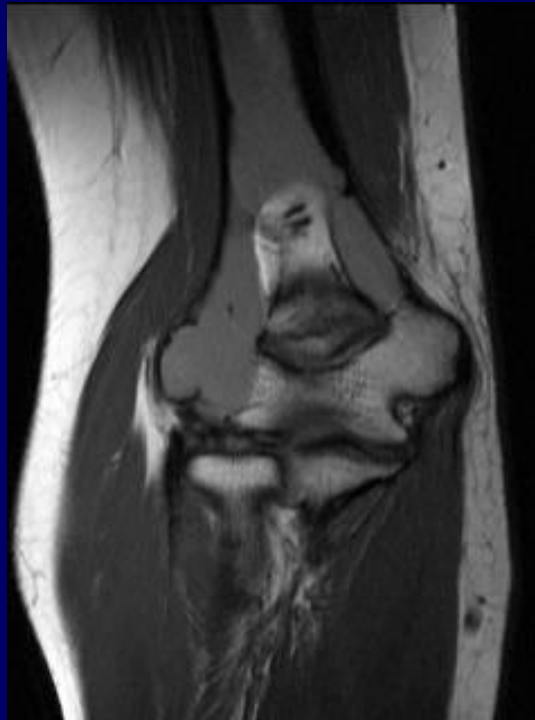
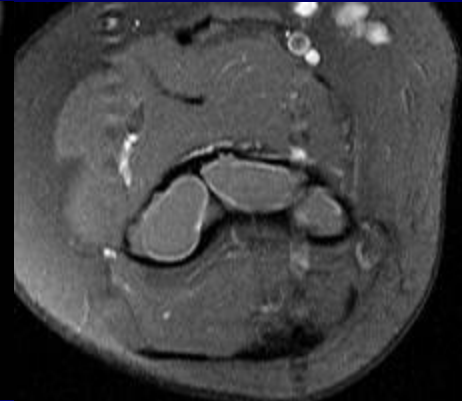
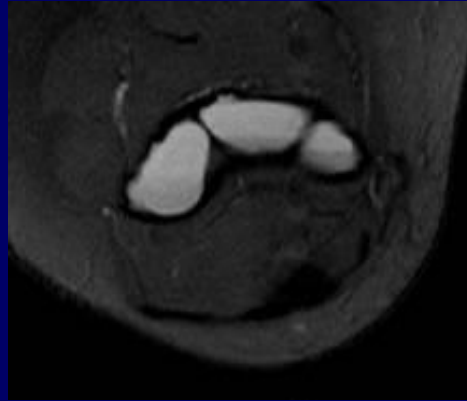
Double-Notch

CASE

- 15yo F with R arm pain, no h/o trauma

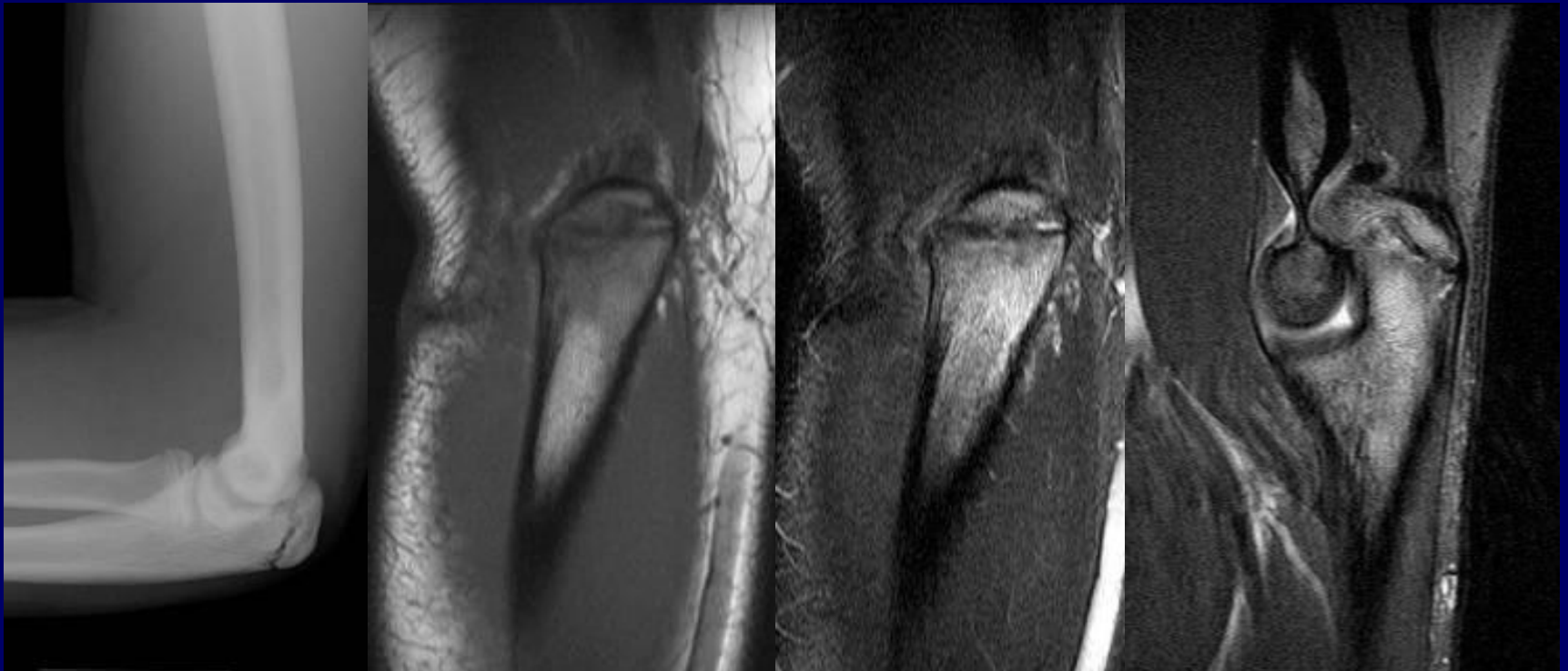


Fibrous Dysplasia / ABC or Both?

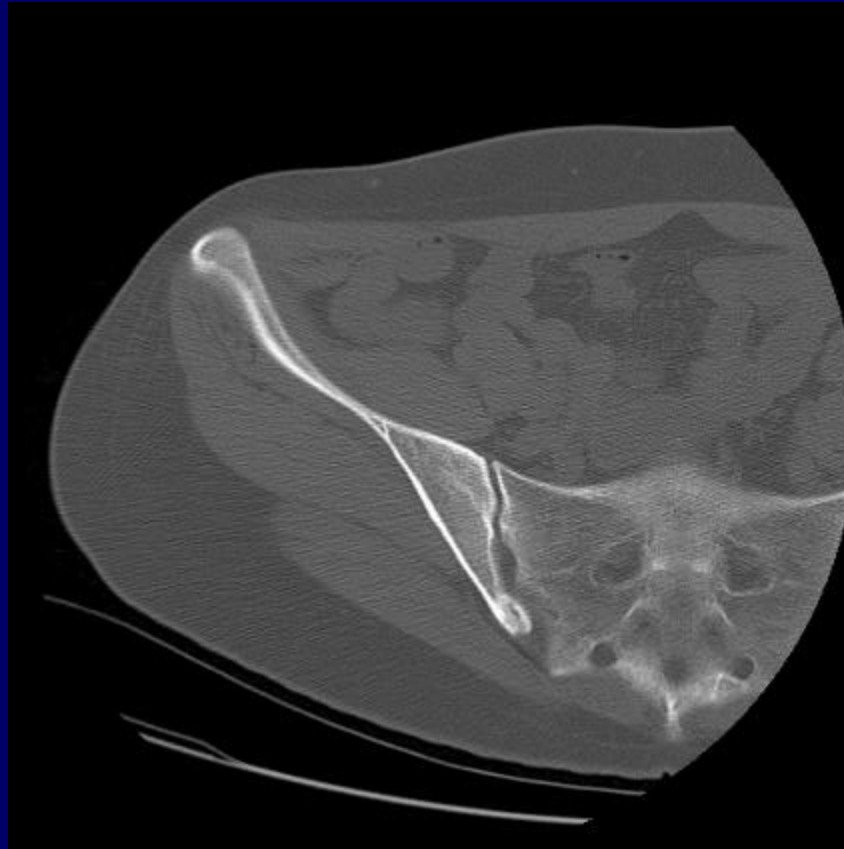


CASE

- 13yoM baseball pitcher with acute onset of pain in posterolateral elbow
- (Dad's a coach)



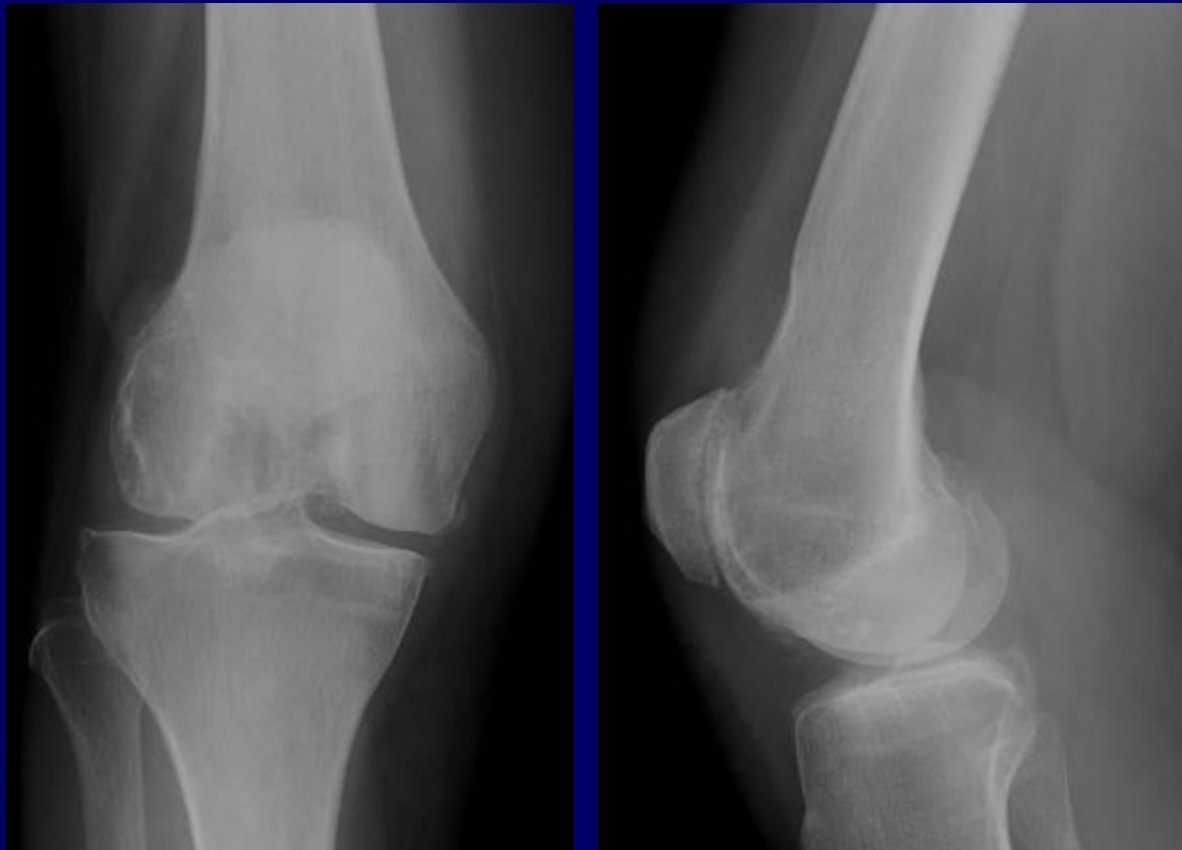
CASE



Accessory SI Joint

CASE

64 year-old female with right knee pain

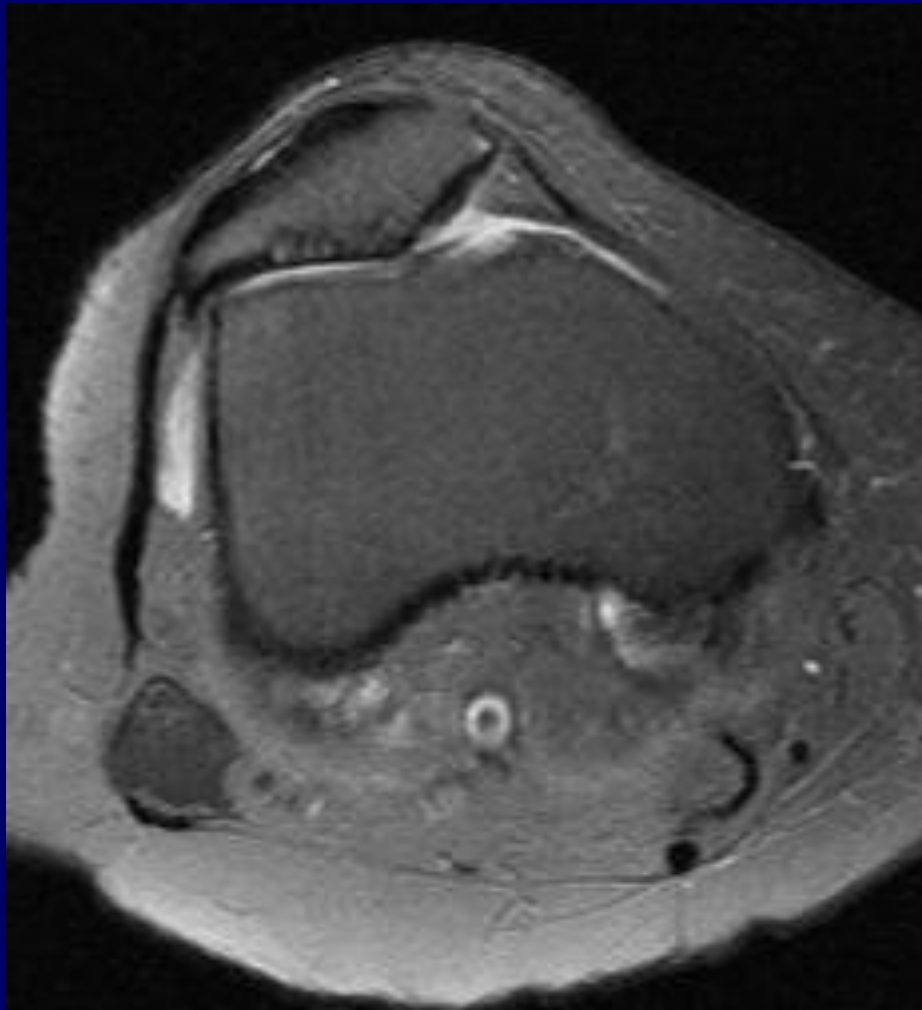


Pyrophosphate Arthropathy

CASE

Medial and Lateral Knee Pain

45 yo female

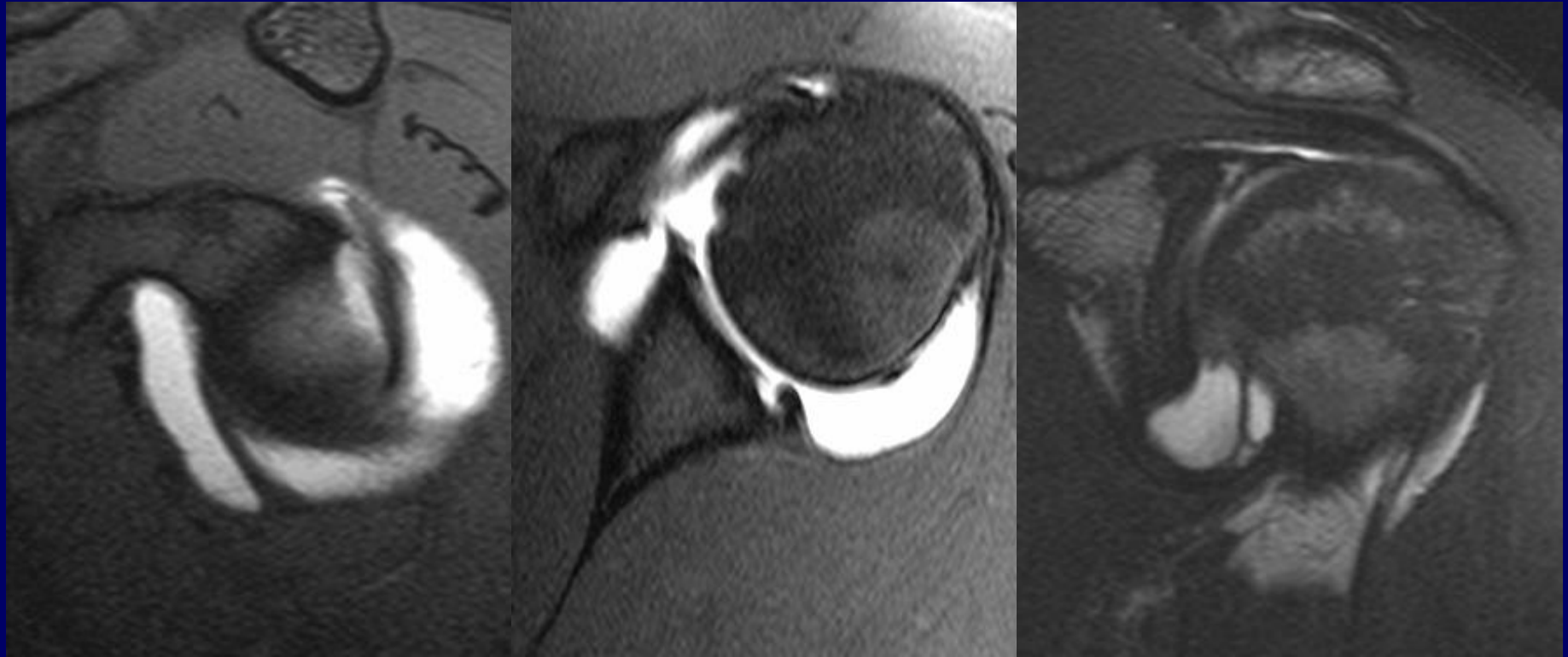


ELPS vs ELTS

CASE

17 yo football player

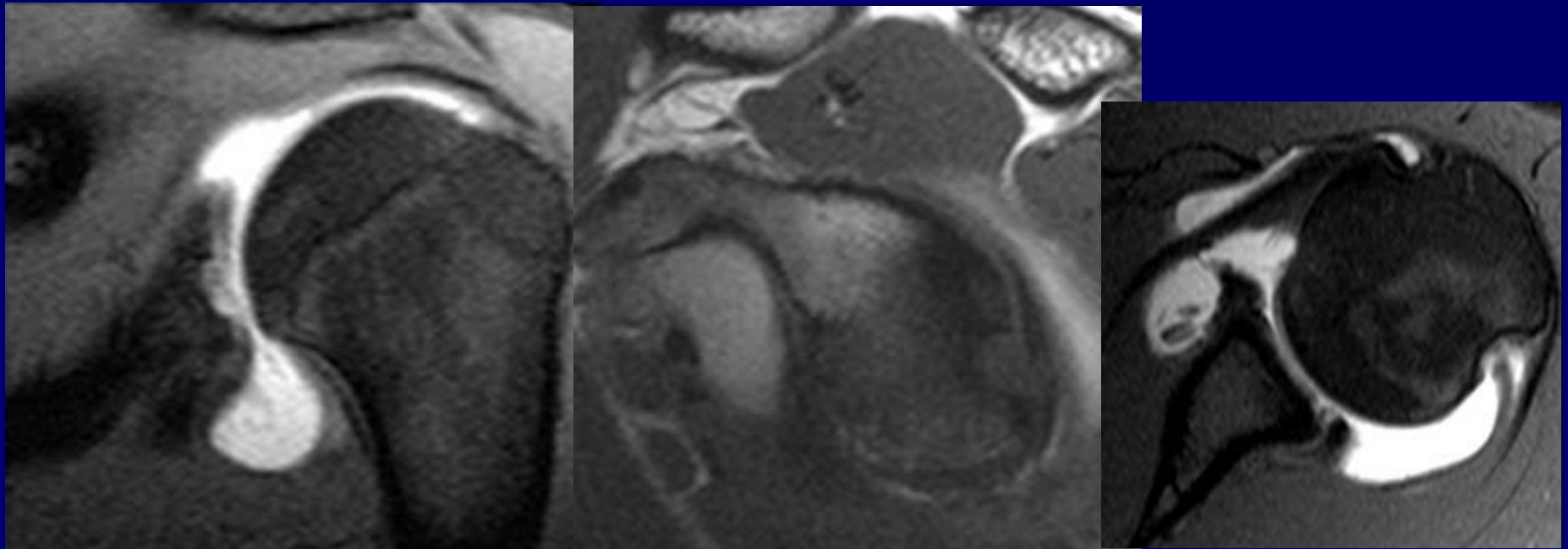
Lineman unable to push off with right
shoulder.



- SLAP tear with fracture of posterior glenoid fossa (impaction).

CASE

16 y/o male lacrosse player
presents with left shoulder pain

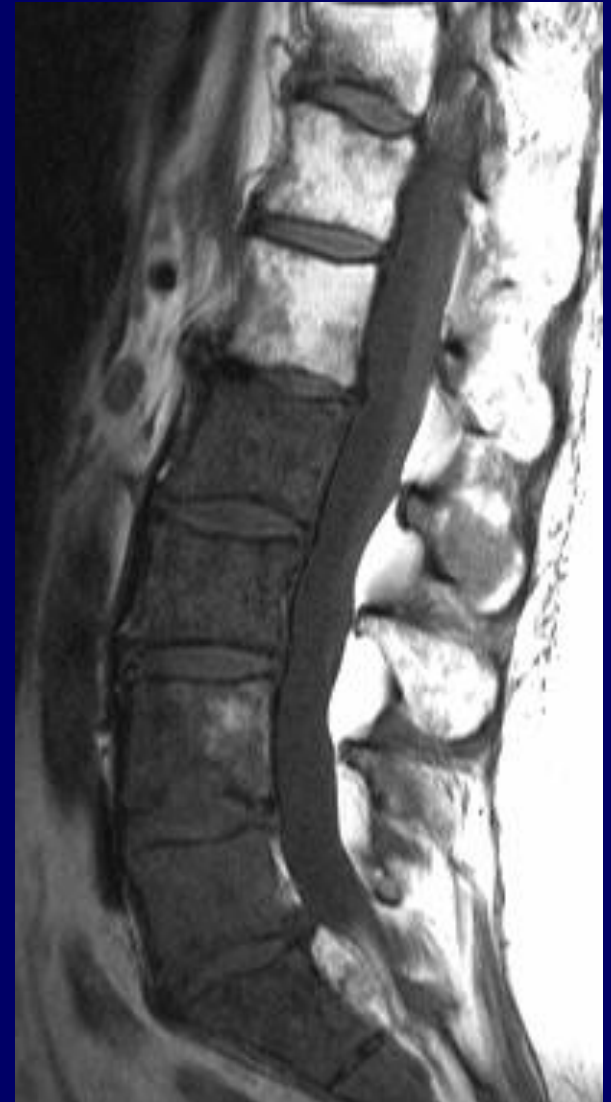


OCD and POLPSA

CASE

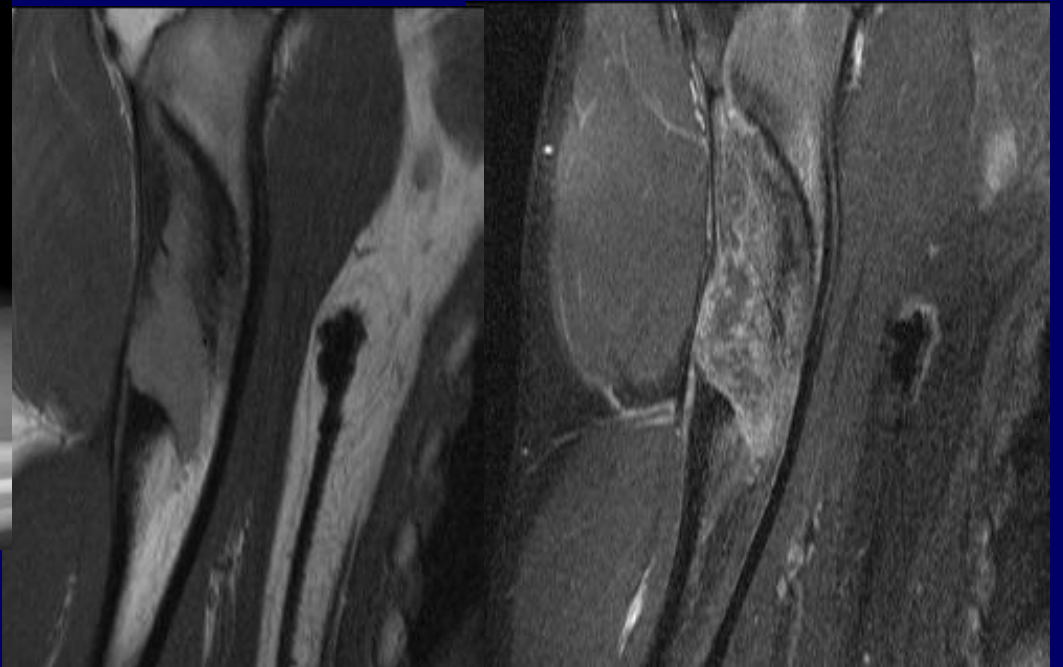
61 y/o female with known
breast malignancy

Metastases with Malignant
Schmorl's Node



CASE

- Hx: 15 year-old boy with a history of trauma two years ago without treatment. Currently presenting with a “dead arm” while playing baseball.



Ollier's Disease

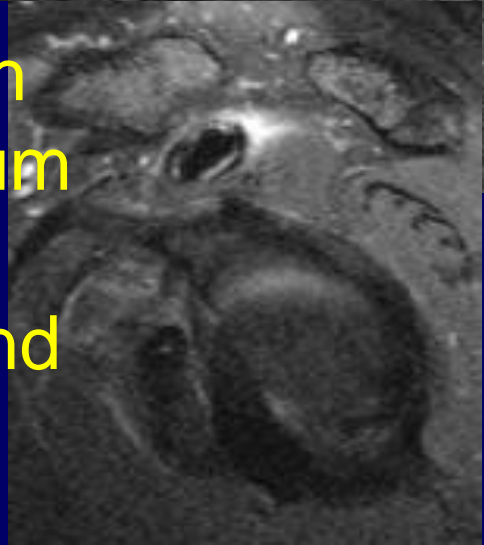
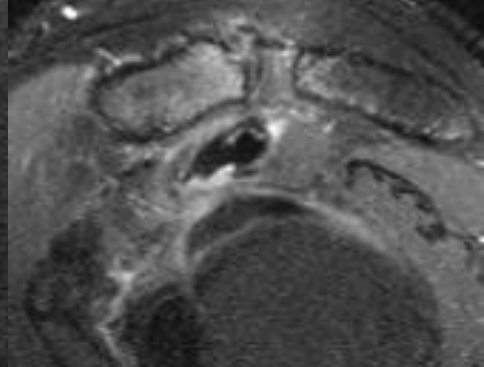
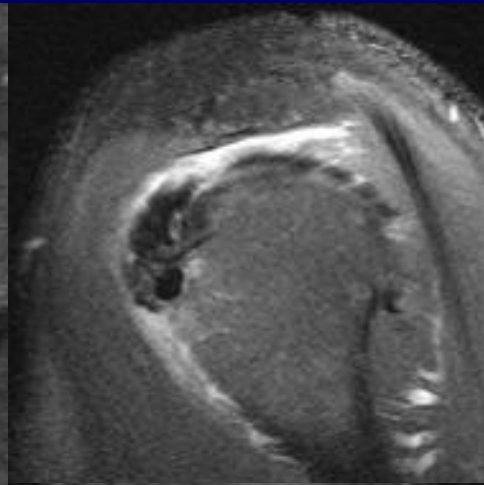
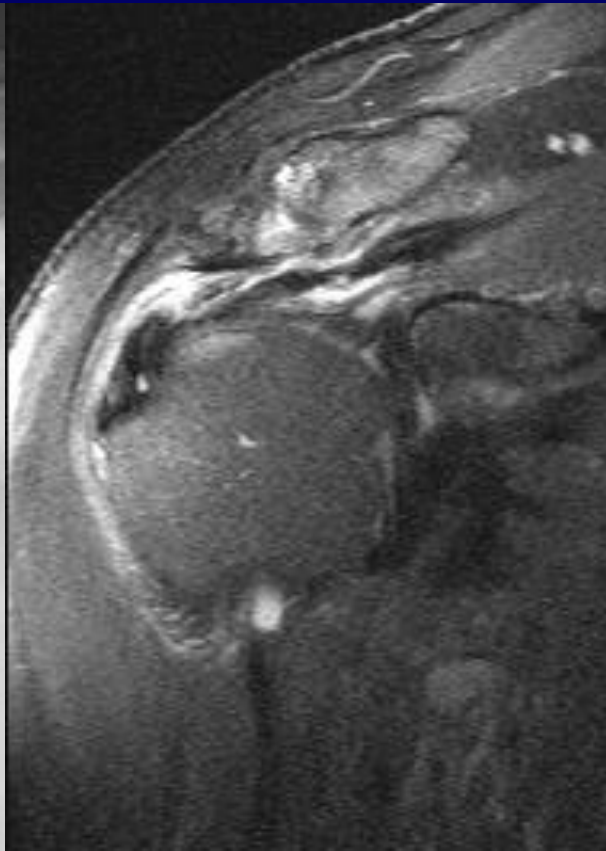
CASE



Gout

CASE

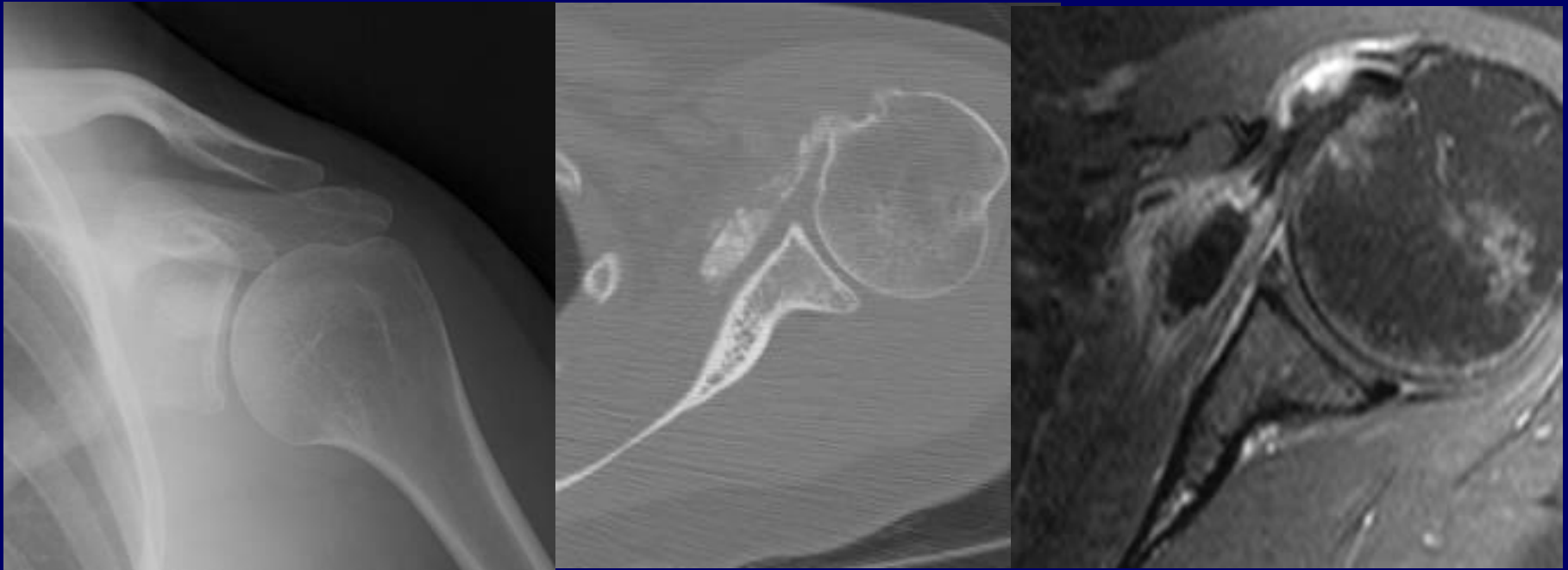
75 yo male with right shoulder pain and decreased range of motion.



Diagnosis: Calcific tendinitis with intratendinous extension of calcium through a delminated tear of suprapinatus as well as bursal and intraosseous involvement!

CASE

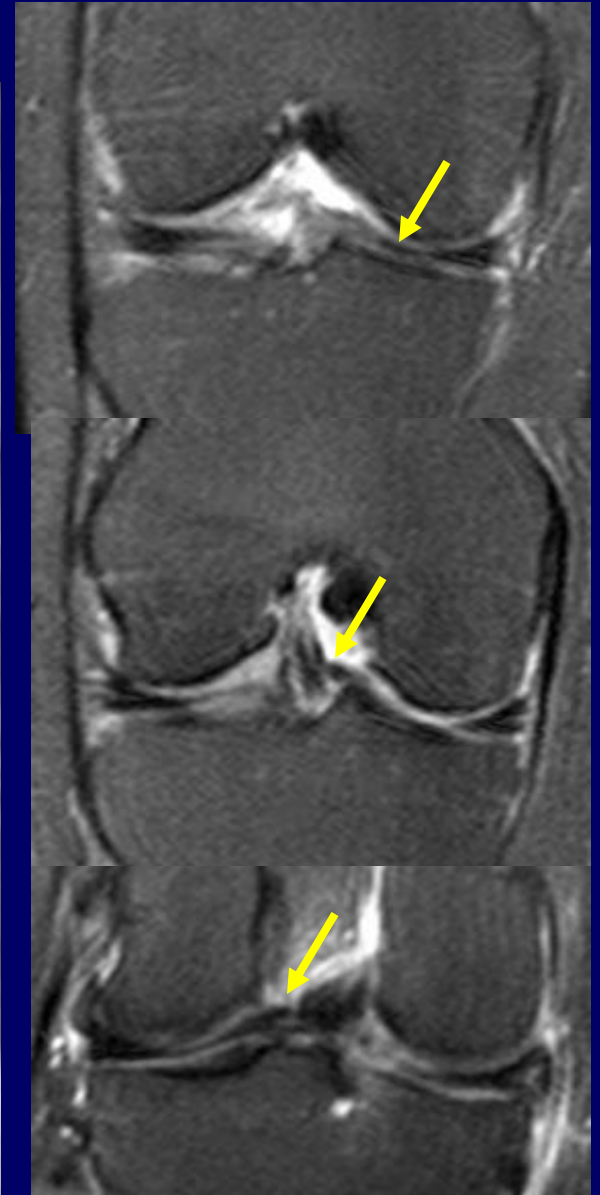
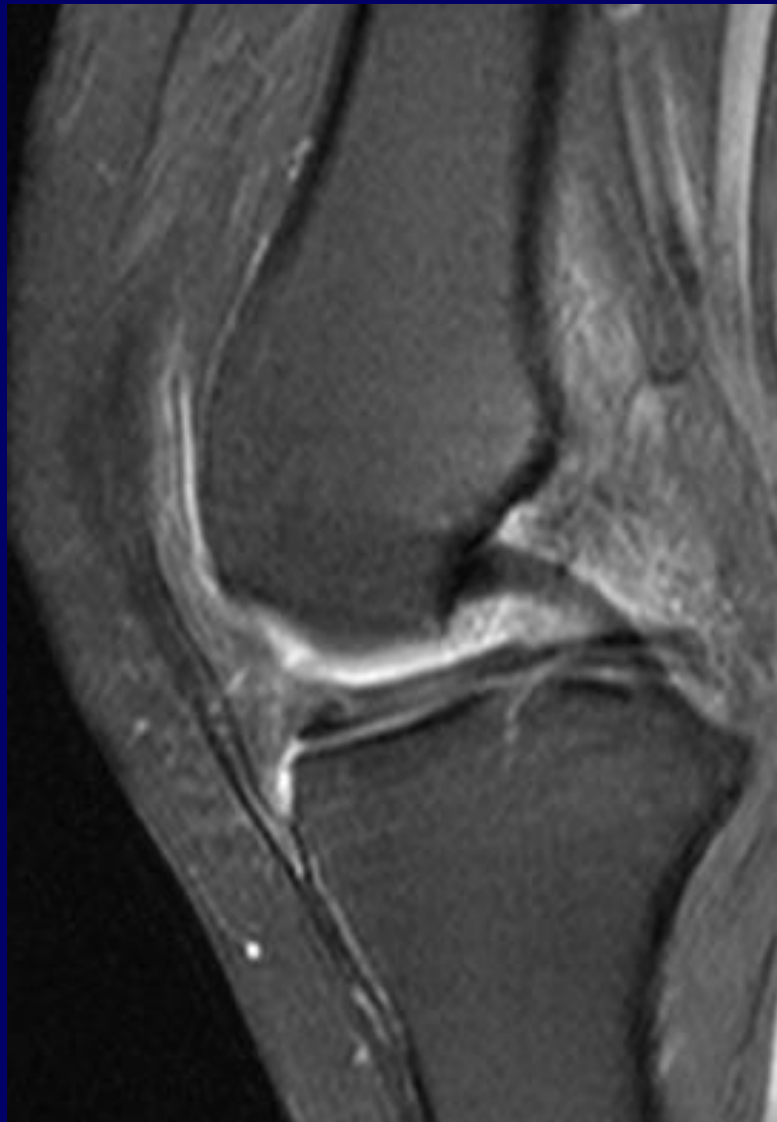
40 y/o with shoulder pain



HADD Simulating Osteoblastic Lesion

CASE

Oblique
medial
menisco-
meniscal
ligament

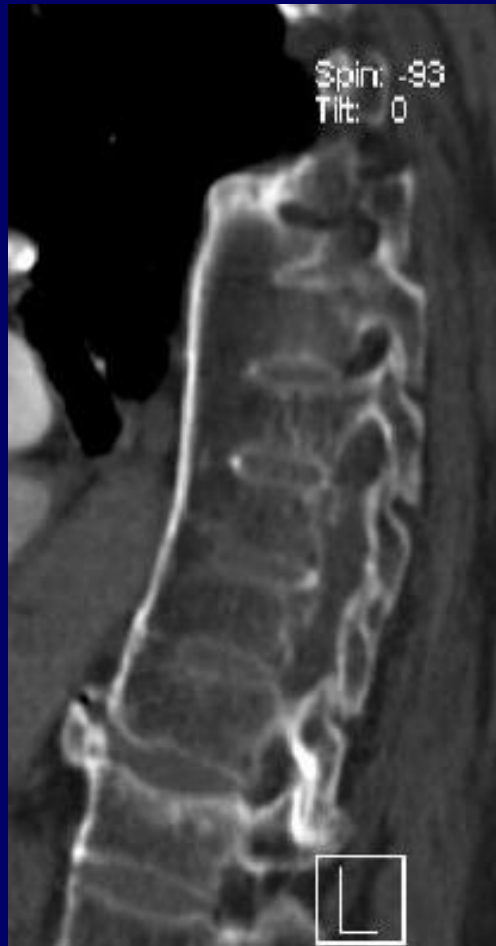


CASE



Diabetic Neuroarthropathy

CASE



Differential diagnosis:

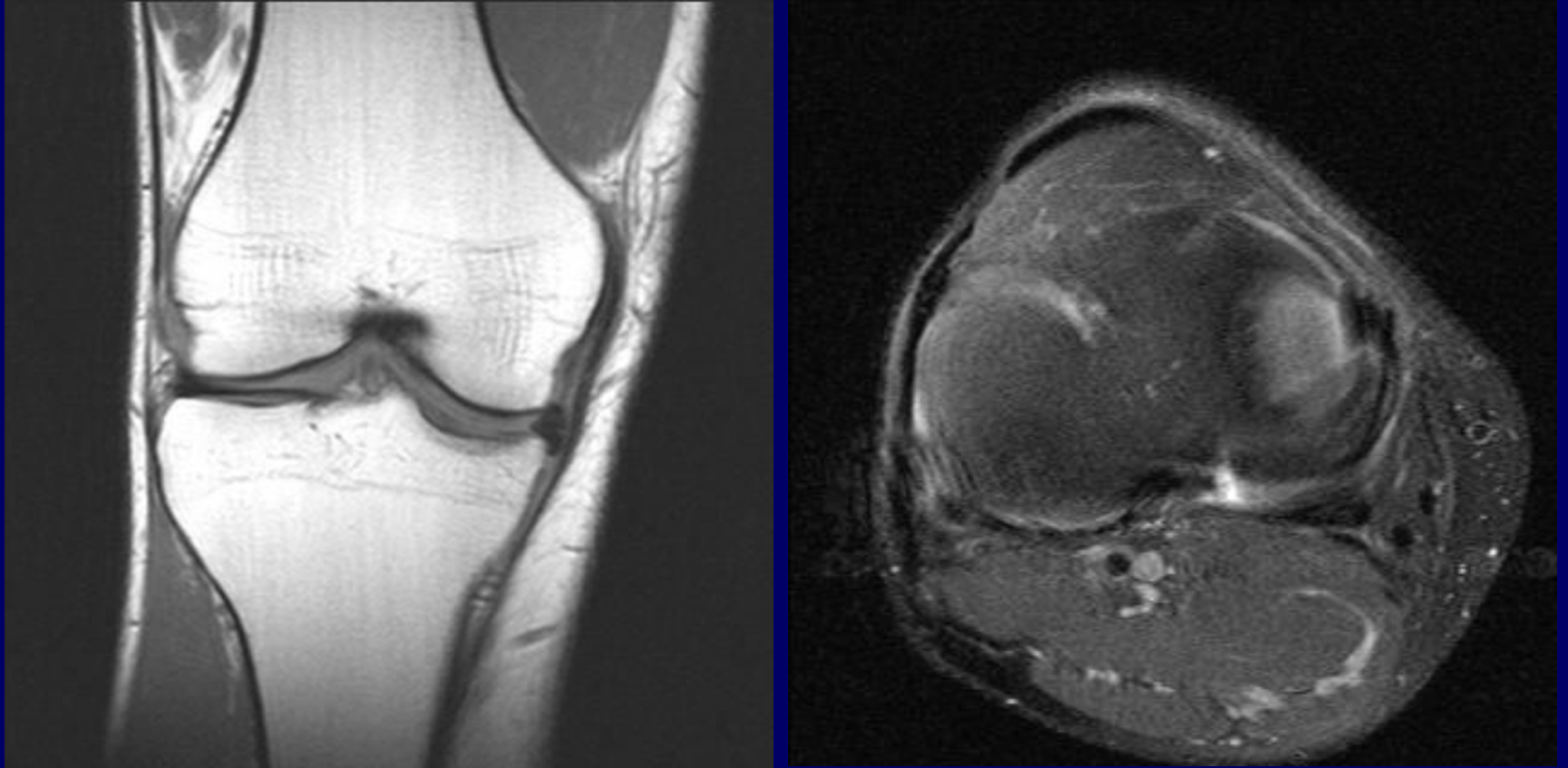
- AS
- DISH
- Senile Kyphosis
- Progressive Idiopathic Vertebral Fusion (thalidomide?)

CASE



Calcaneal Stress Fracture:
4 week interval

CASE



Flap Tear

CASE

75 year-old with left hip pain



Paget's Disease

CASE

58 year old female with gradual increase in cystic changes within the vertebral bodies of L3 and L4 following interbody graft at these levels.

