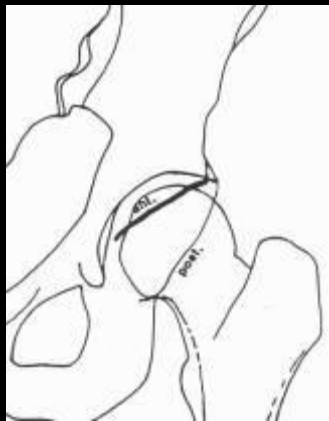

December 8, 2005

Hx: 71 yo with L shoulder pain

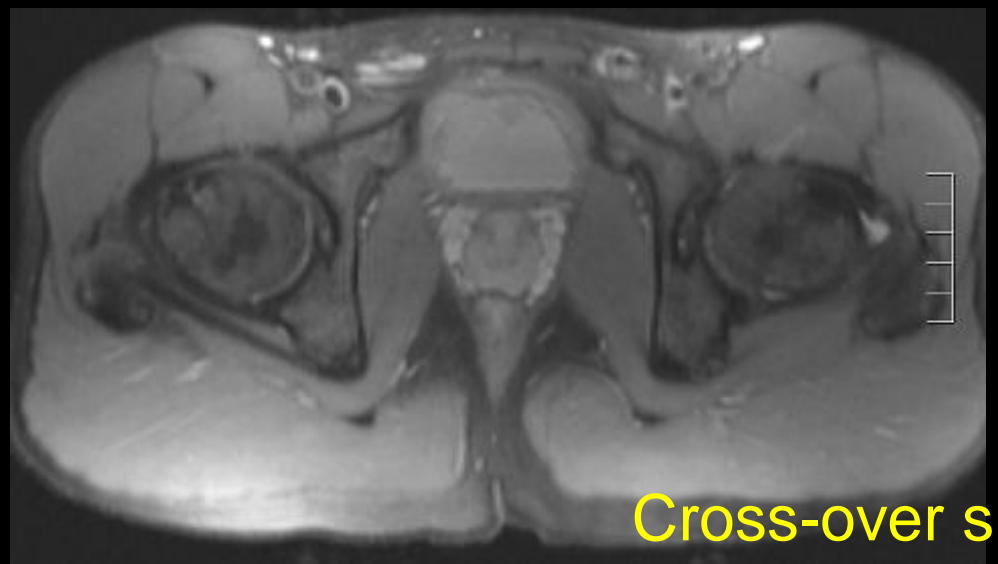
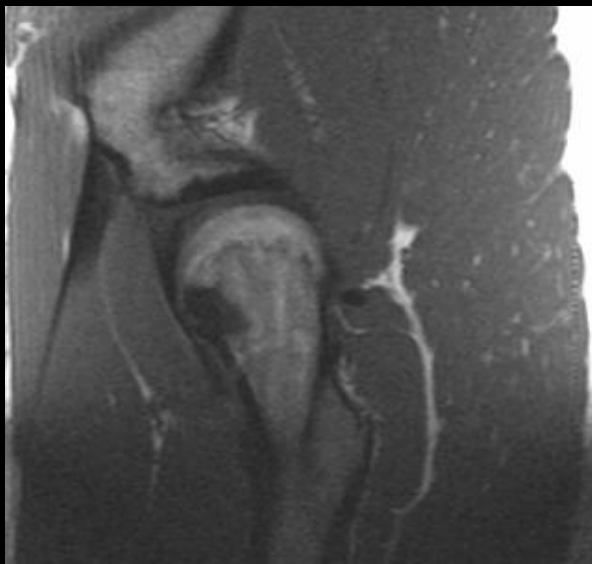
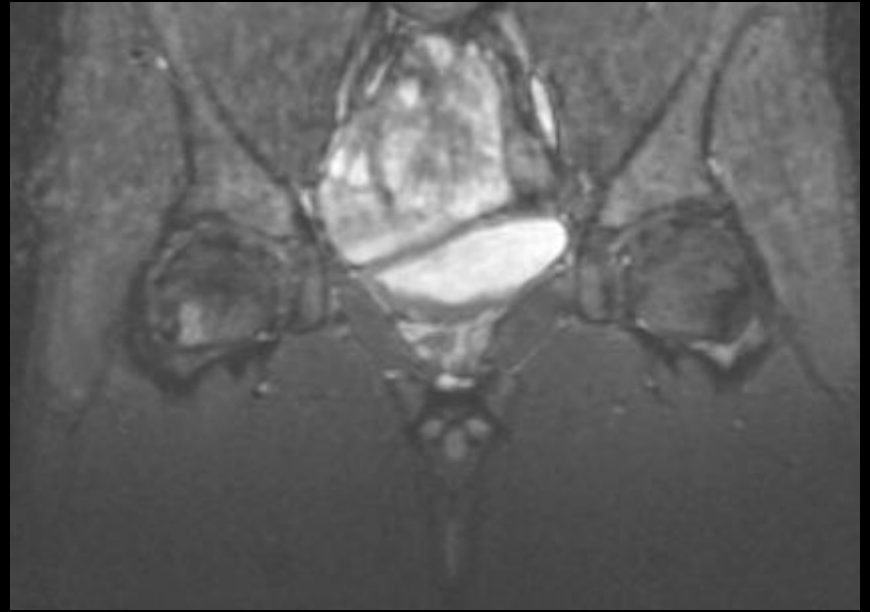
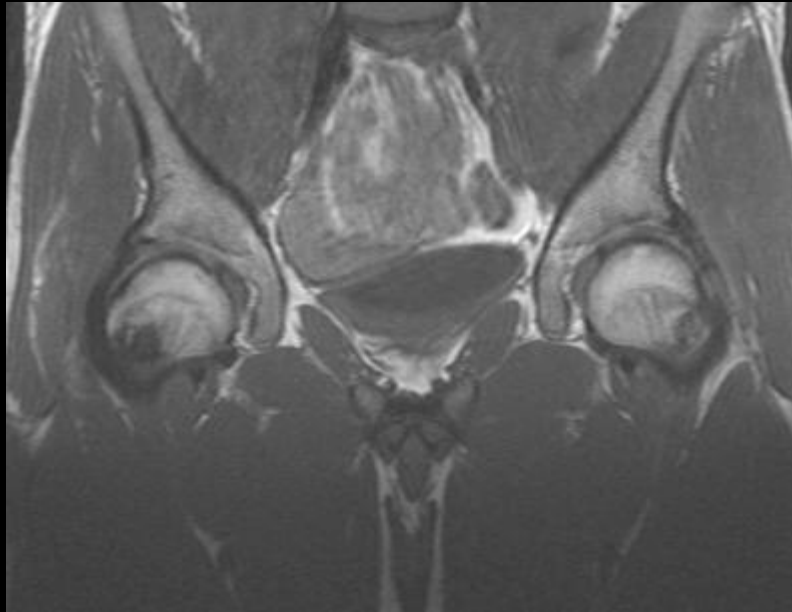


Rheumatoid arthritis

21 yo with bilateral hip pain, right greater than left.

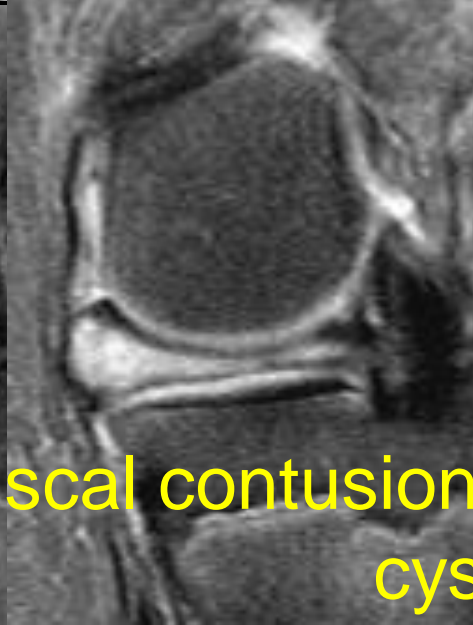
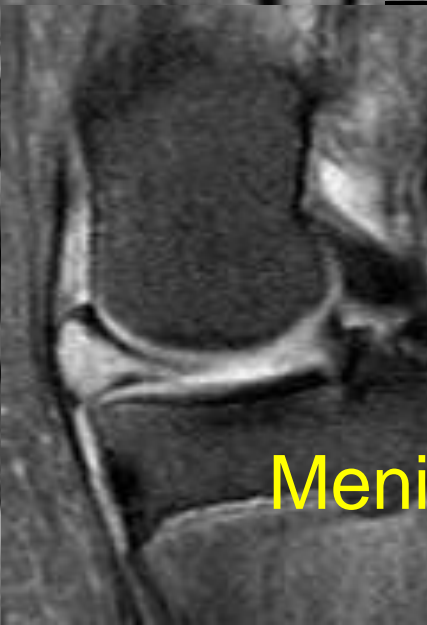
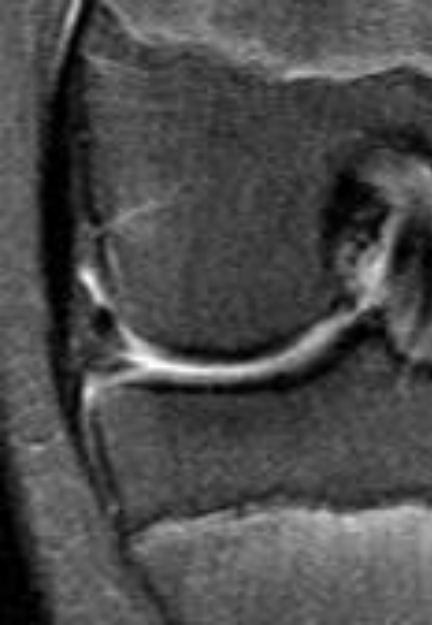
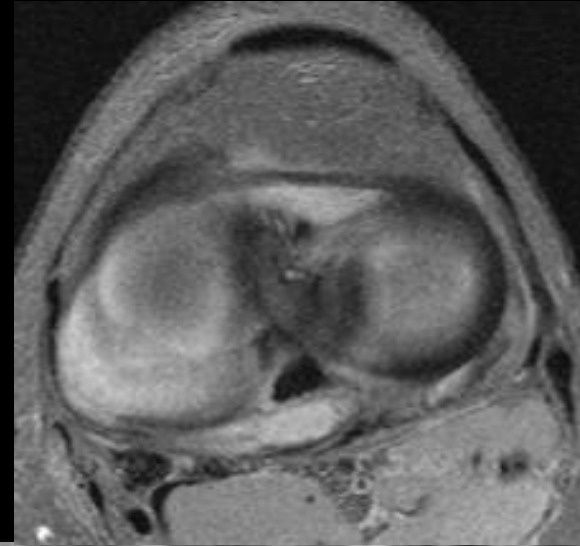
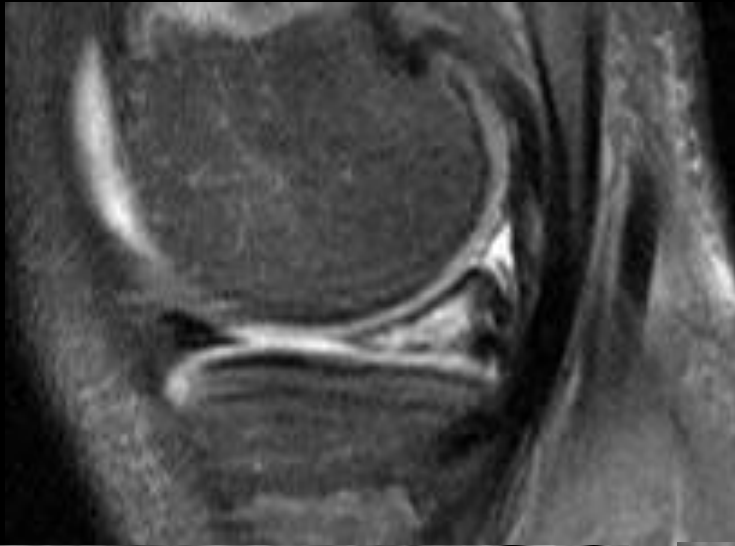


21 yo with bilateral hip pain, right greater than left.



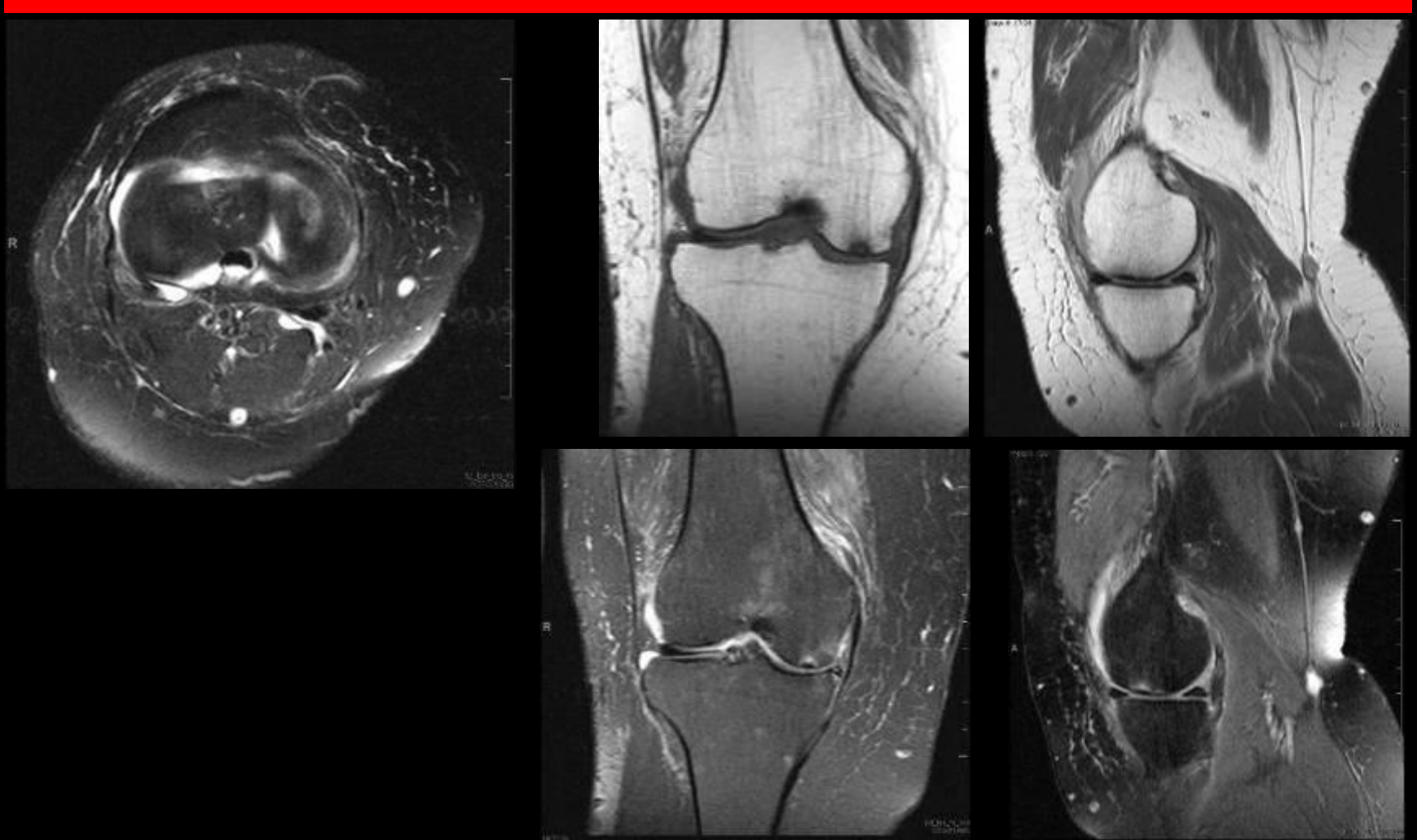
Cross-over sign

15 yo dancer with twisting fall injury and subsequent clicking sensation



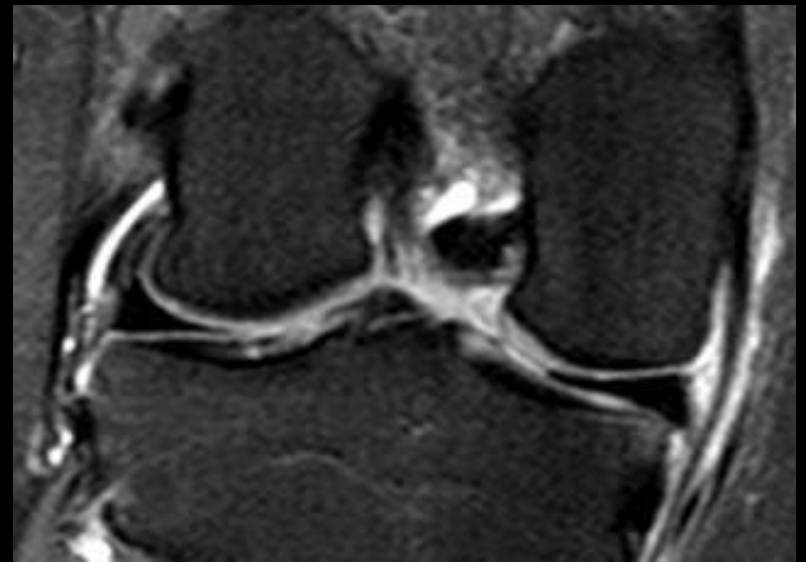
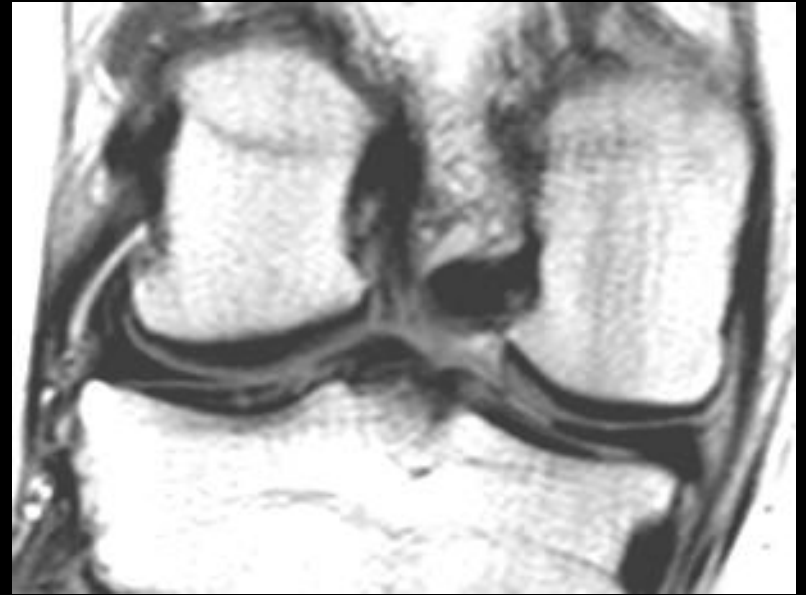
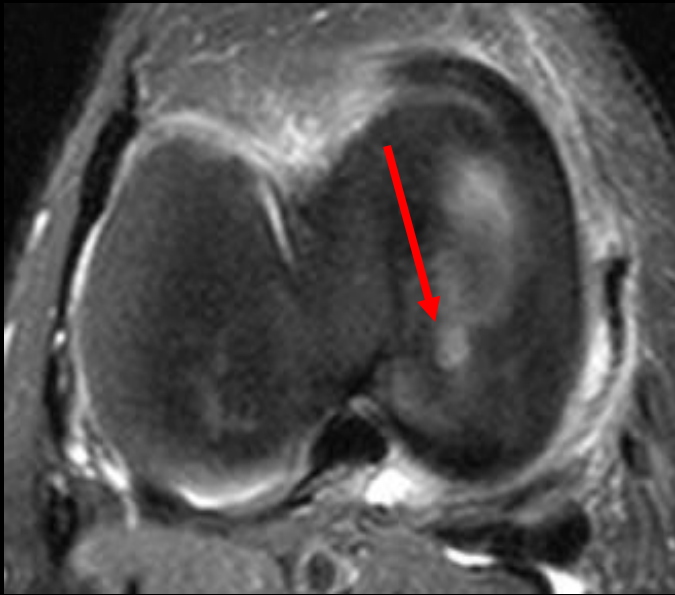
Meniscal contusion vs intrameniscal cyst

History: 53 year old female with pain after arthroscopy and partial medial meniscectomy. She has been taking naprosyn and is s/p corticosteroid injection



Postoperative SONK (stress fx)

47 year old man with right knee pain for 10 days after riding a mountain bike. Clicking but no locking. Reported as a beak tear of the medial meniscus.



75 y/o male with shoulder pain.



Soft tissue chondroma versus intra-articular body

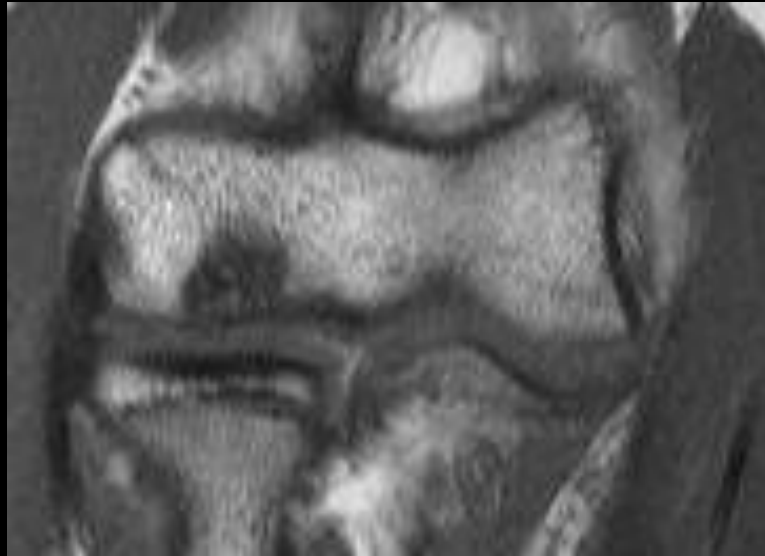
73 y/o M with osteoarthritis status post recent left total knee arthroplasty



Synovial osteochondromatosis confined to suprapatellar bursa

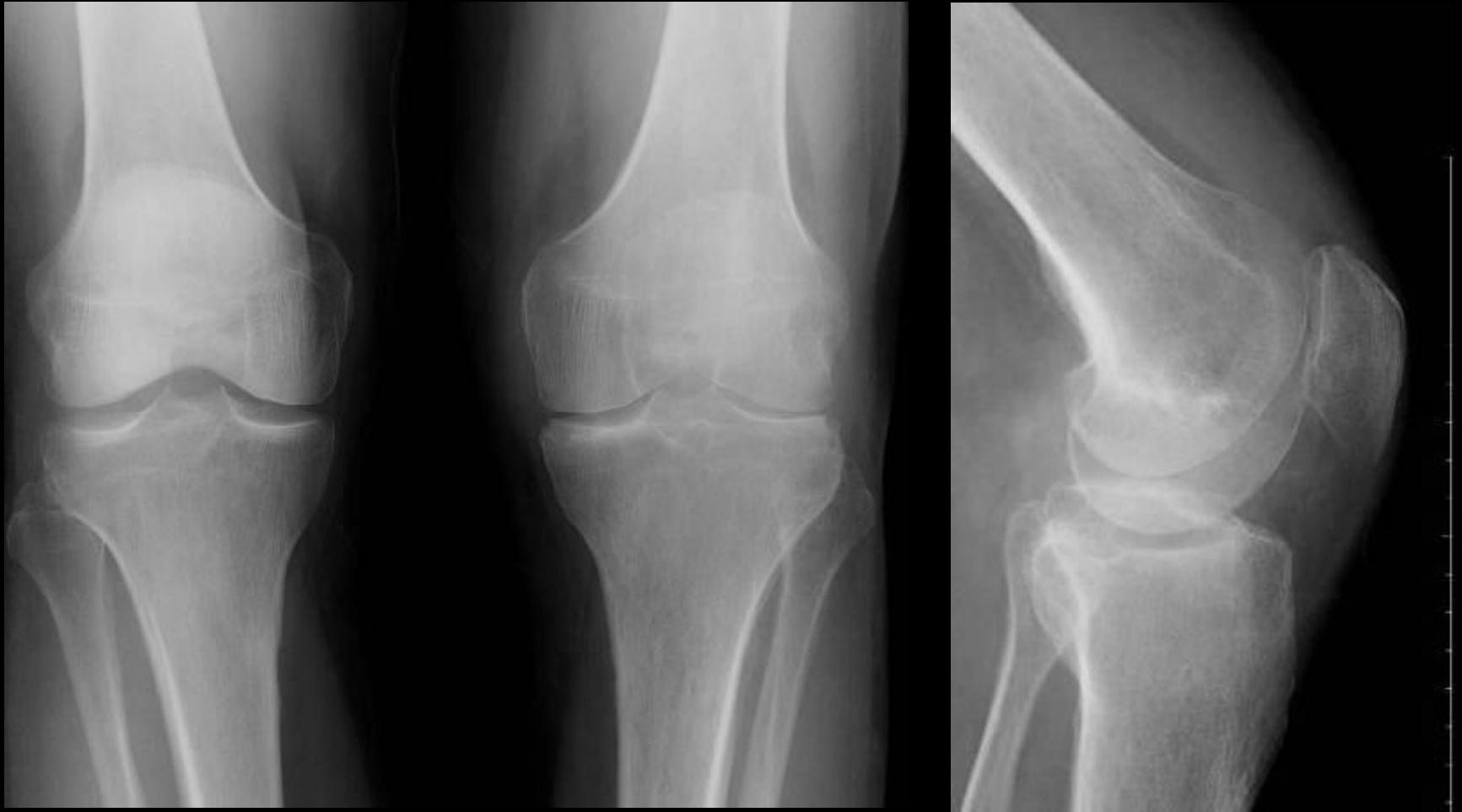
14 year old pitcher with medial elbow pain for two years with slight decrease in range of motion.

8mm osteochondral lesion in capitellum.



OCD vs Panner's disease

49 y/o male hx of Several months of left knee pain



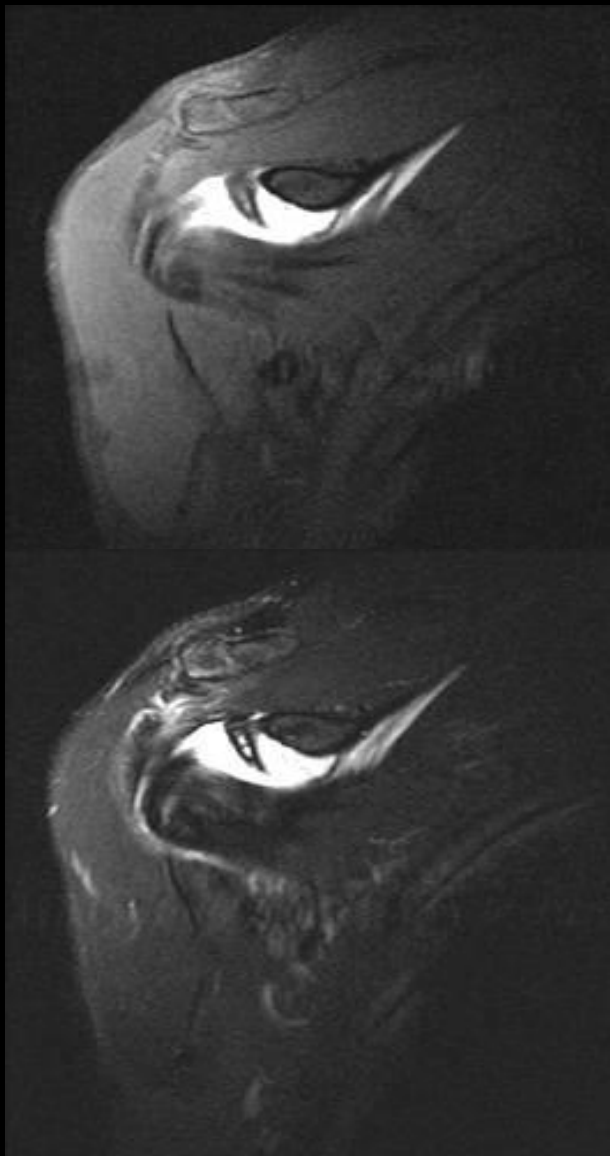
Rheumatoid Arthritis

72 y.o. woman with shoulder pain



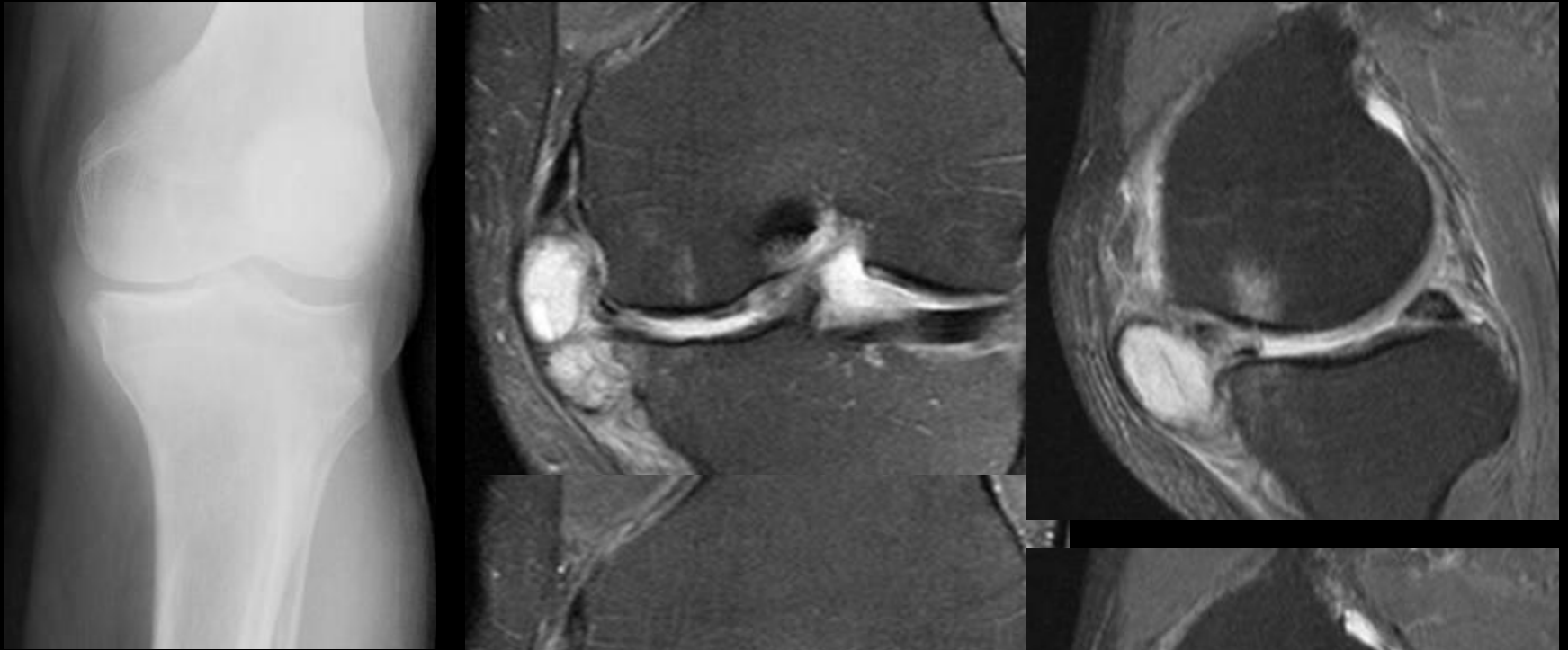
CPPD arthropathy

Shoulder pain



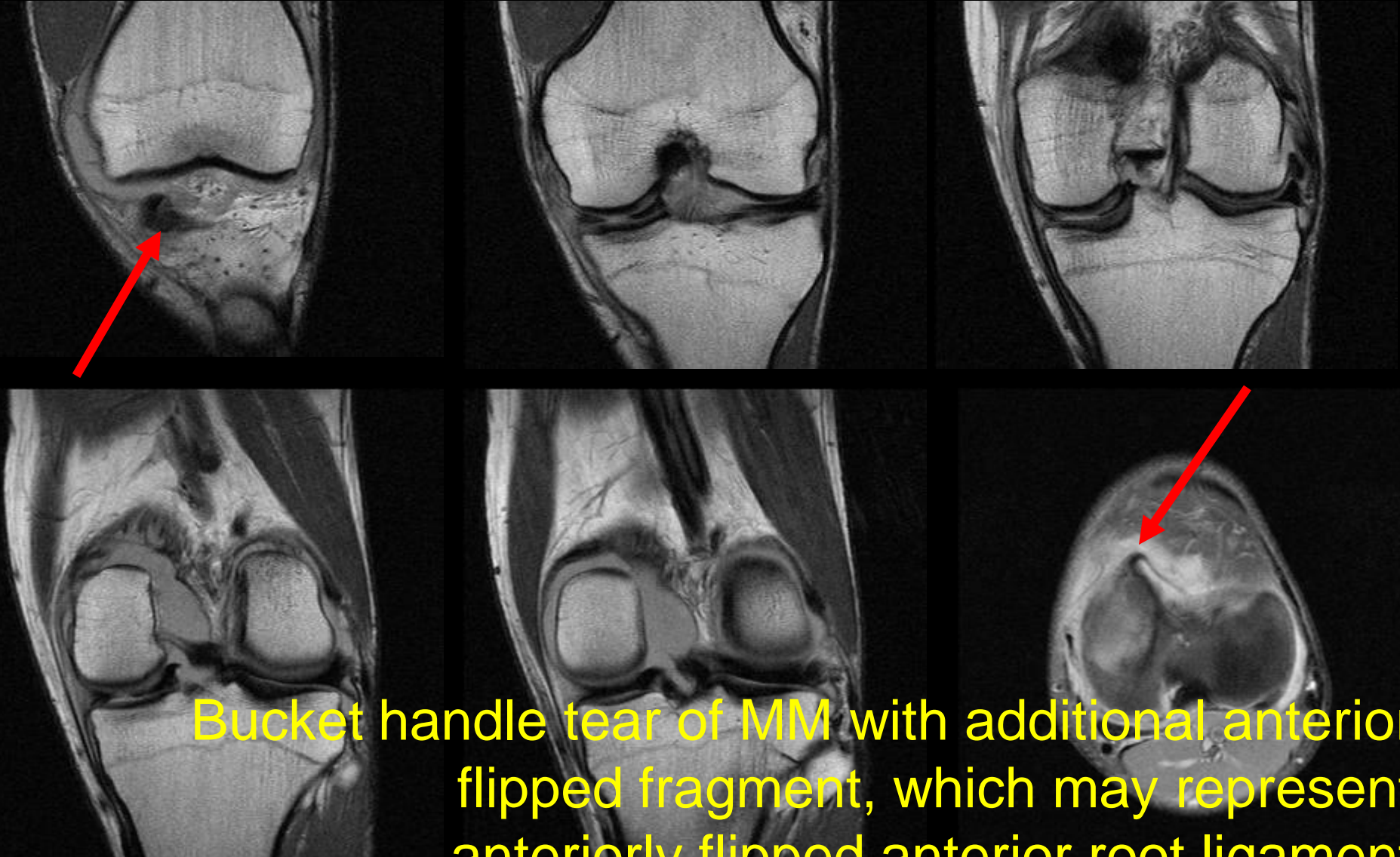
SLAP X lesion

65 y/o male with left knee pain and fullness of the medial tissues



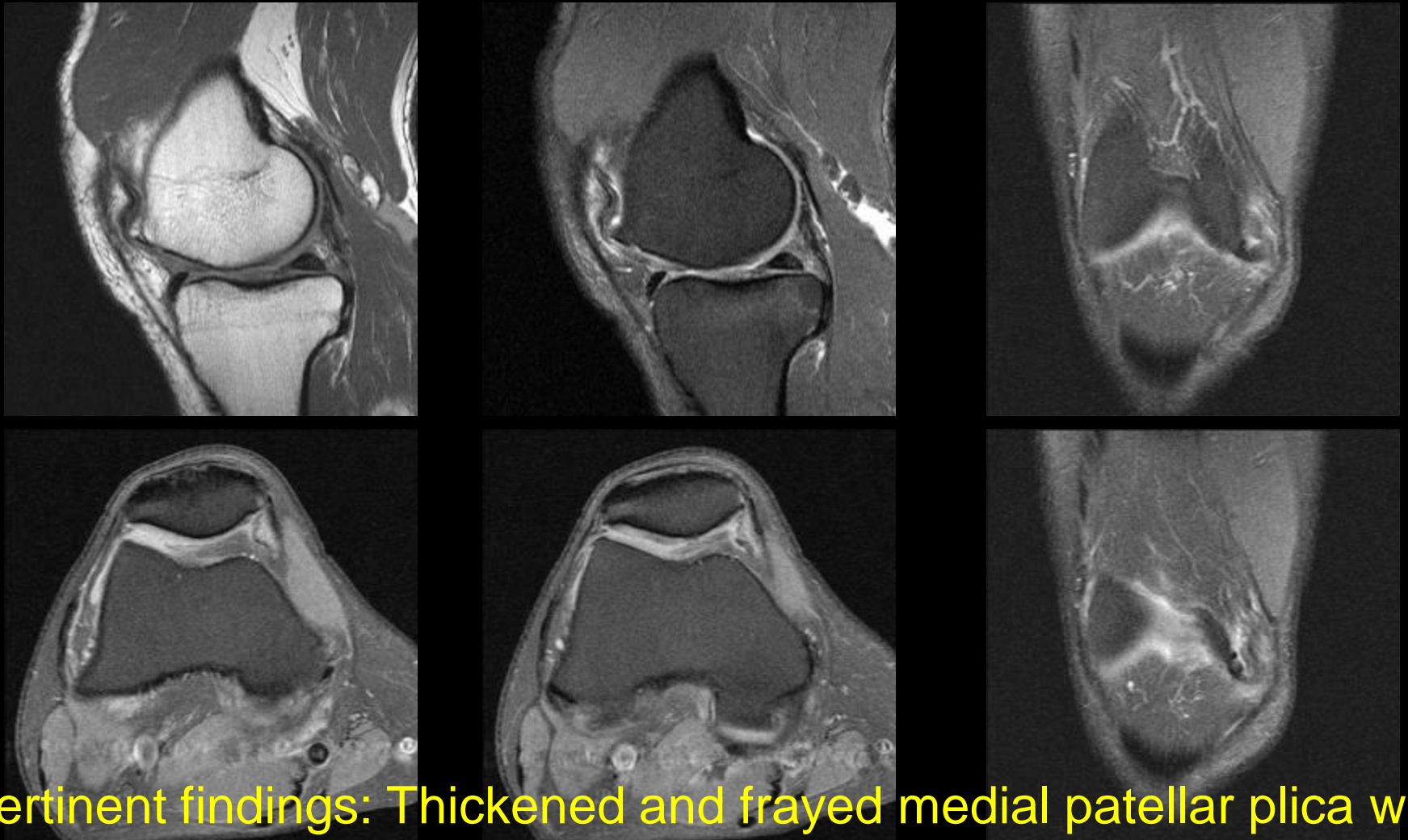
Macerated Ant horn and body medial meniscus with 4.1 x 3.5 x 2.6 cm parameniscal cyst.

18 yo with surfing injury: twisted knee felt a pop, and since then can't fully extend knee



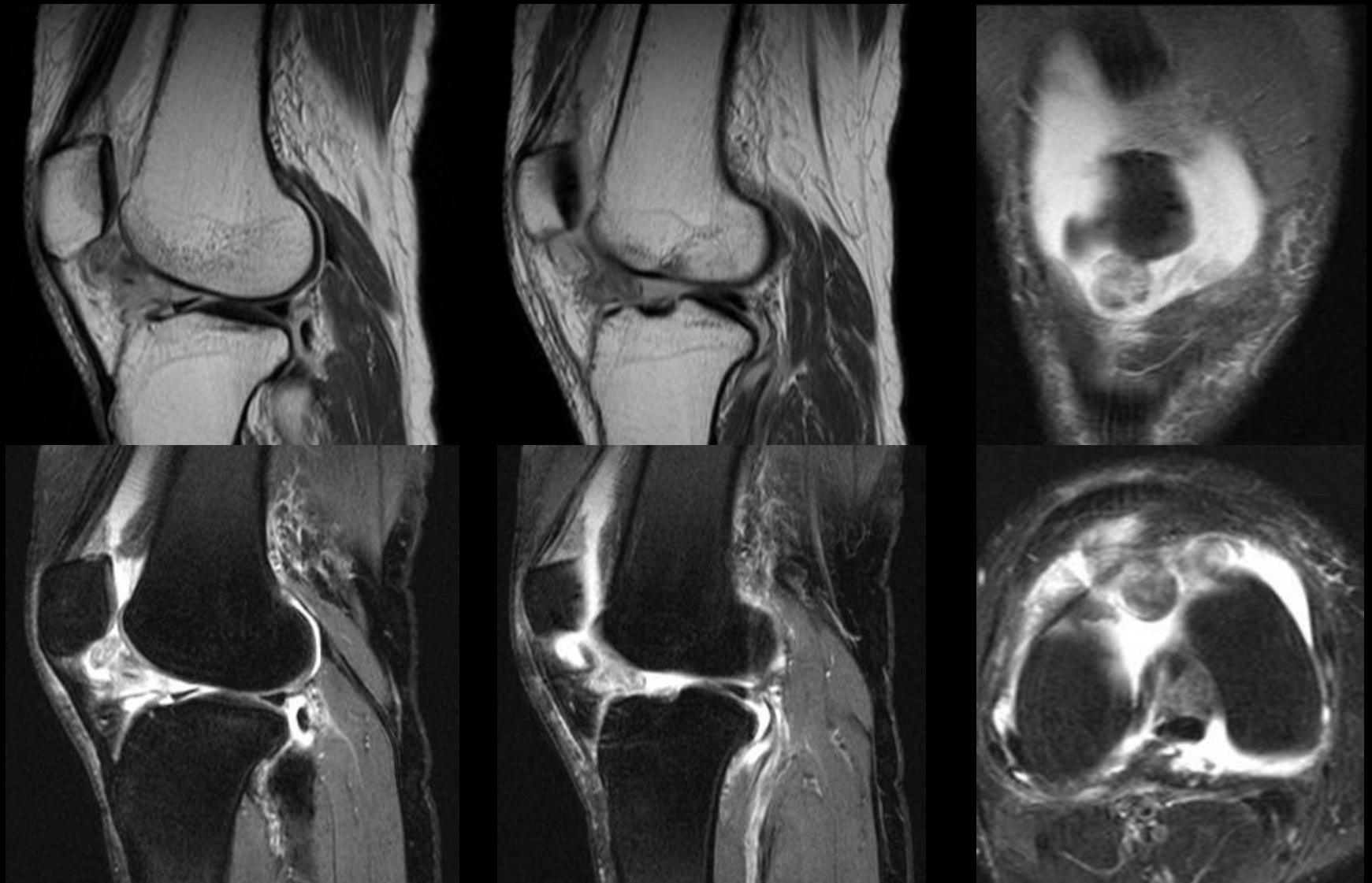
Bucket handle tear of MM with additional anterior flipped fragment, which may represent anteriorly flipped anterior root ligament

59 yo male with knee pain and remote injury



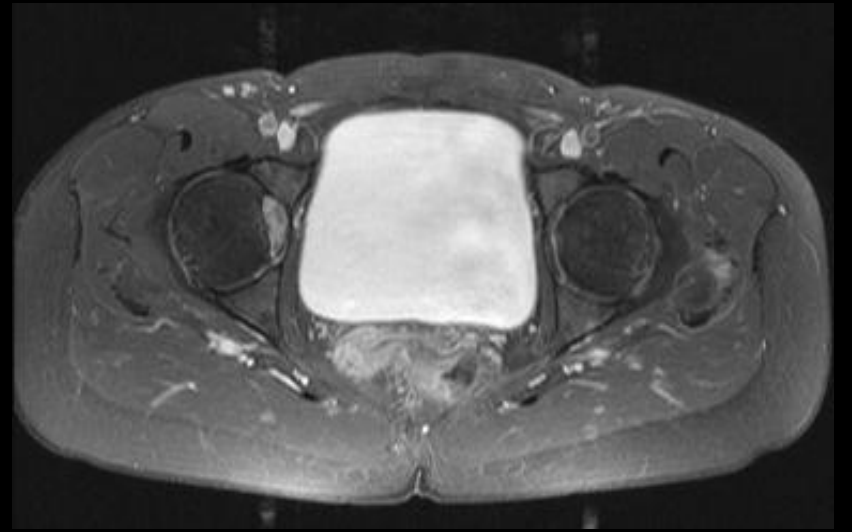
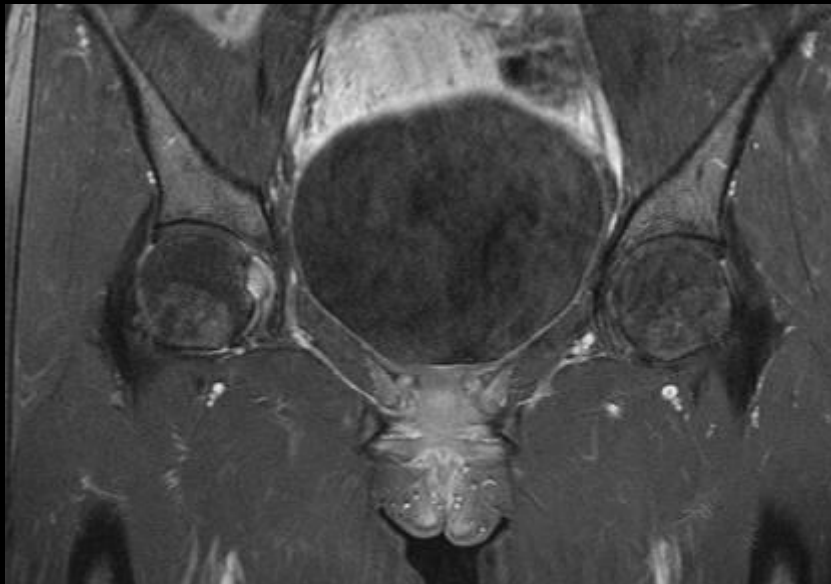
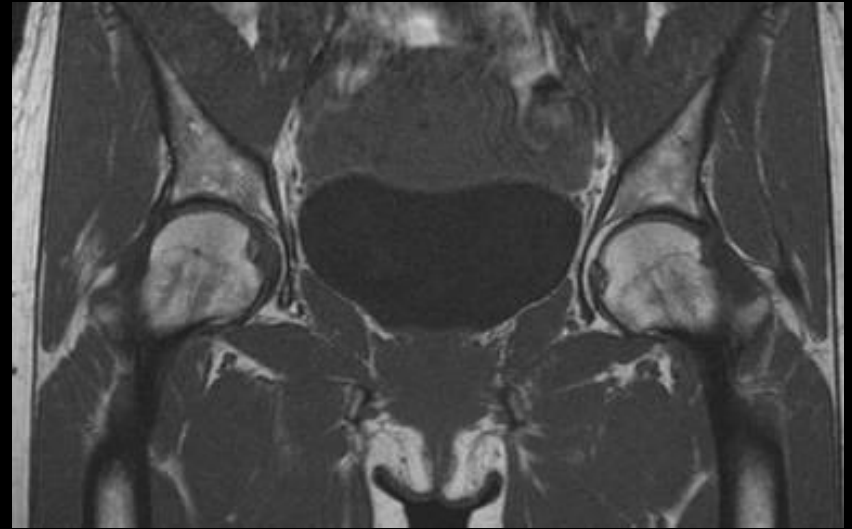
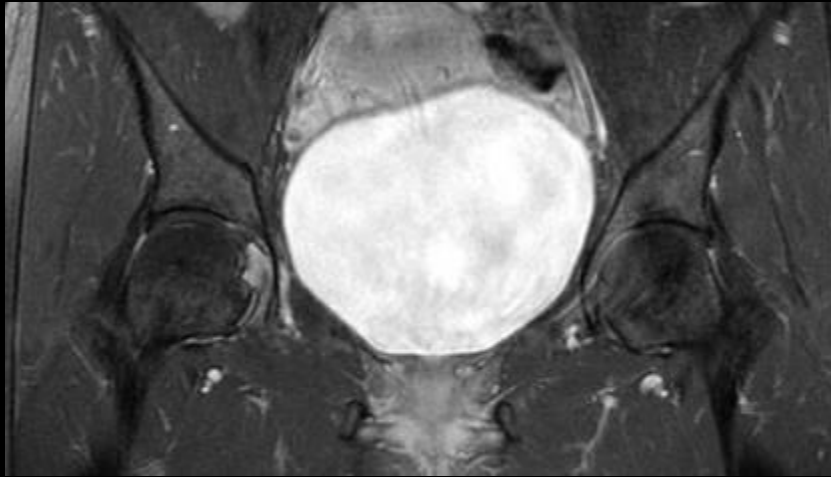
Pertinent findings: Thickened and frayed medial patellar plica with associated chondromalacia of the medial patellar facet. Correlate clinically for medial plica syndrome.

38 yo female with knee pain extending to calf

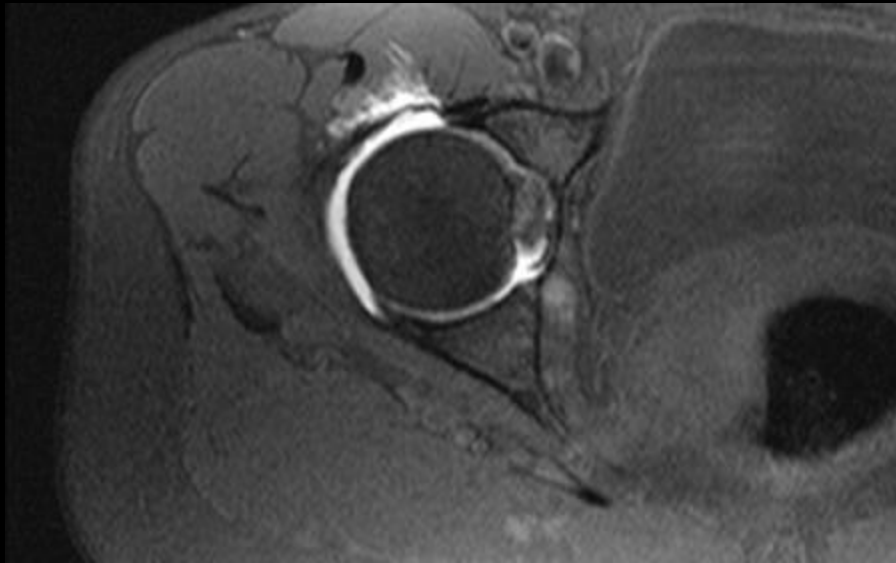


Focal nodular synovitis

40 yo female with chronic hip pain with pilates



40 yo female with chronic hip pain with pilates

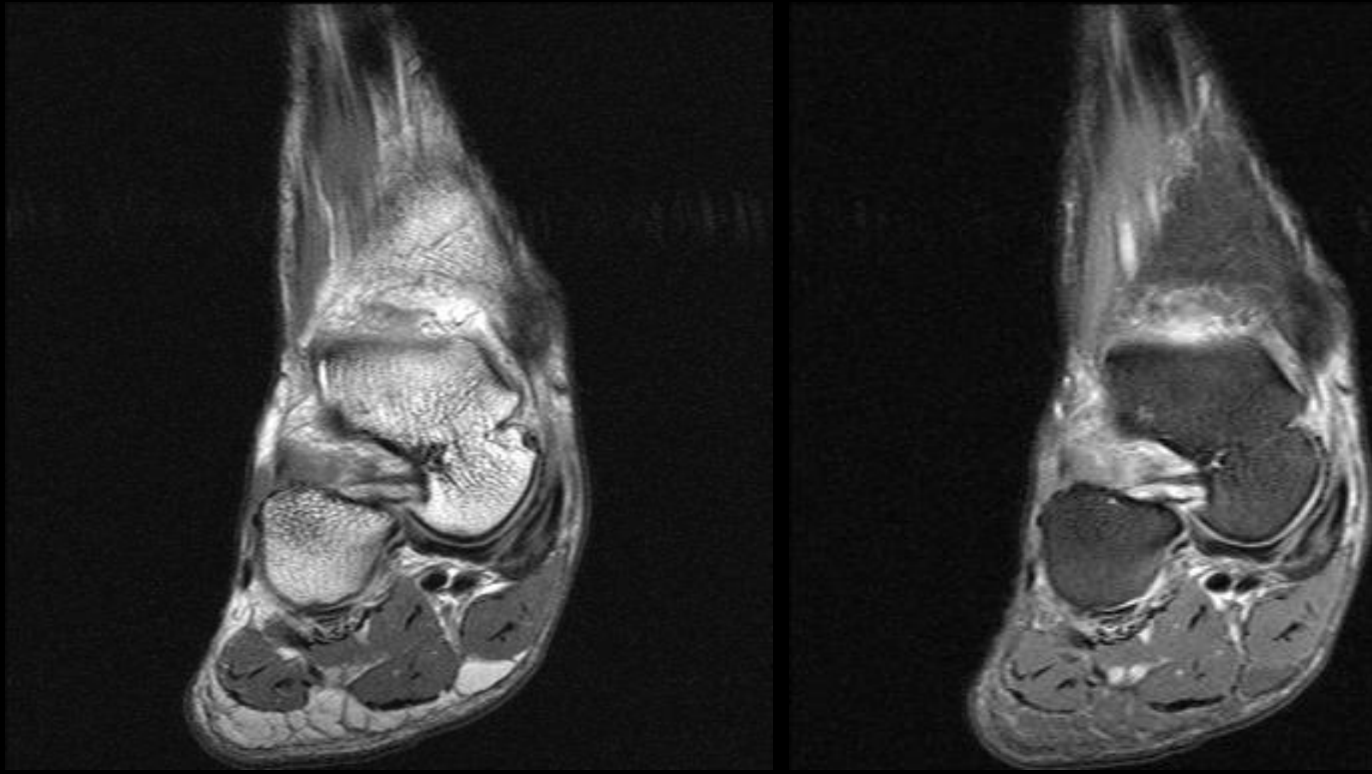


T1 FS IAGd



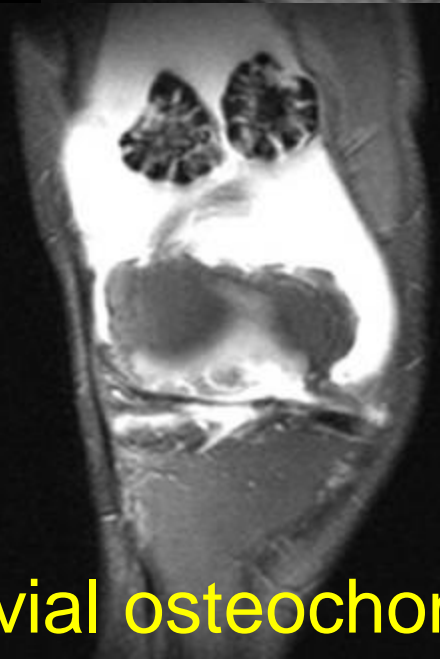
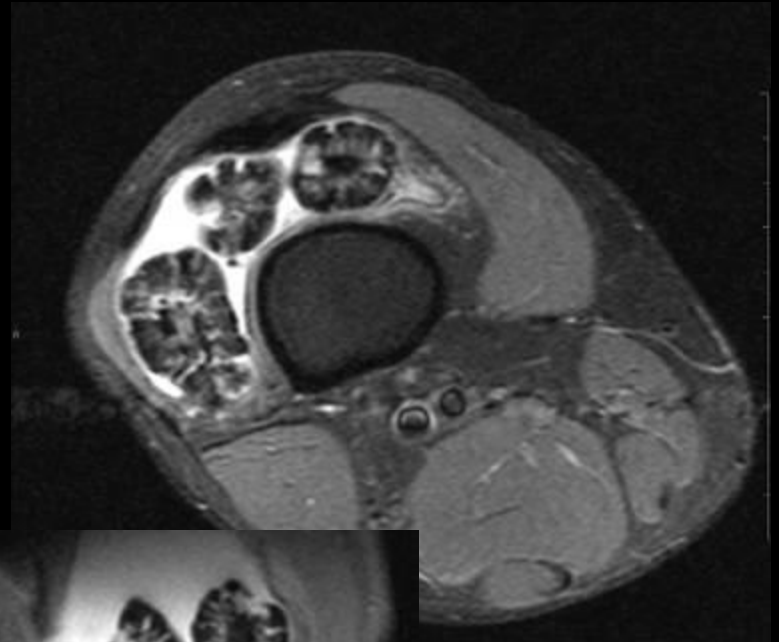
Cystic degeneration of the ligament teres

52 year old male with history of pes planus and clinical suspicion of Spring ligament laxity.



HINDFOOT VALGUS AND
THICKENING OF THE INFEROPLANTAR SPRING LIGAMENT

Prior knee surgery, now with increased knee pain



Secondary synovial osteochondromatosis