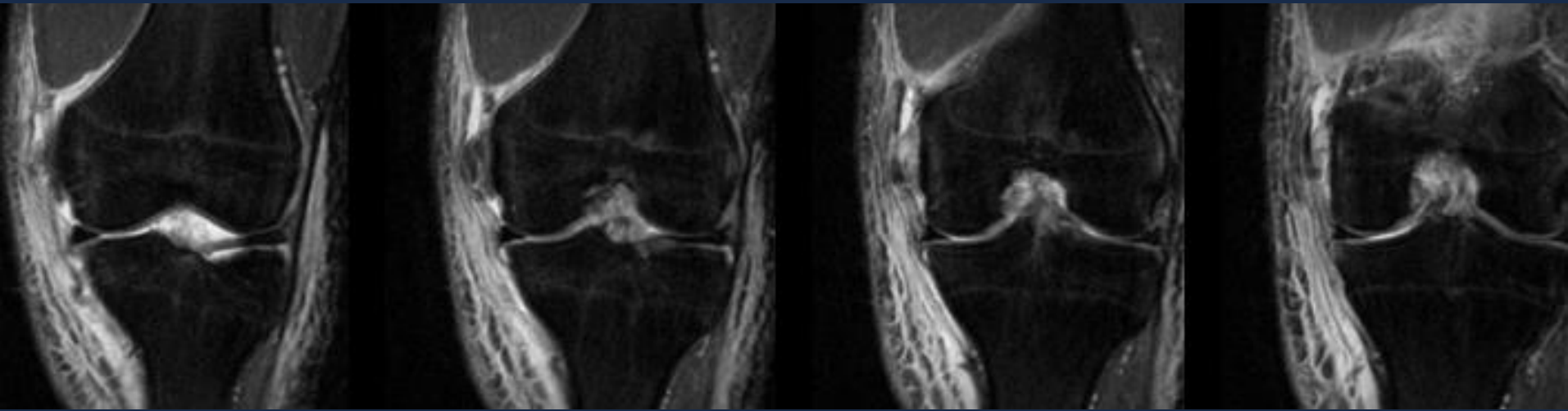


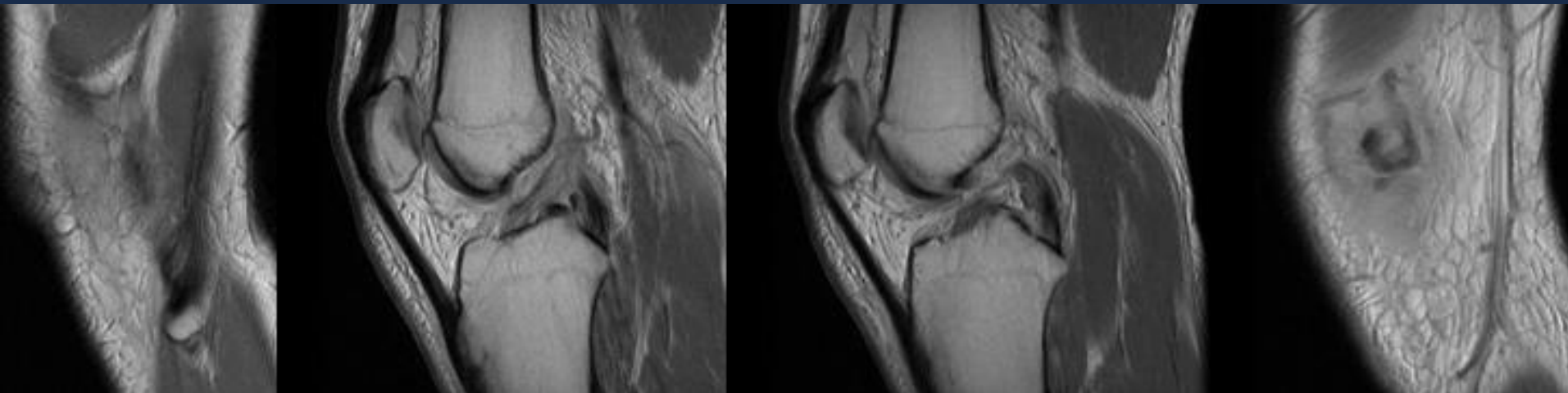
Hmmmm... “19 year old with skateboarding injury...”





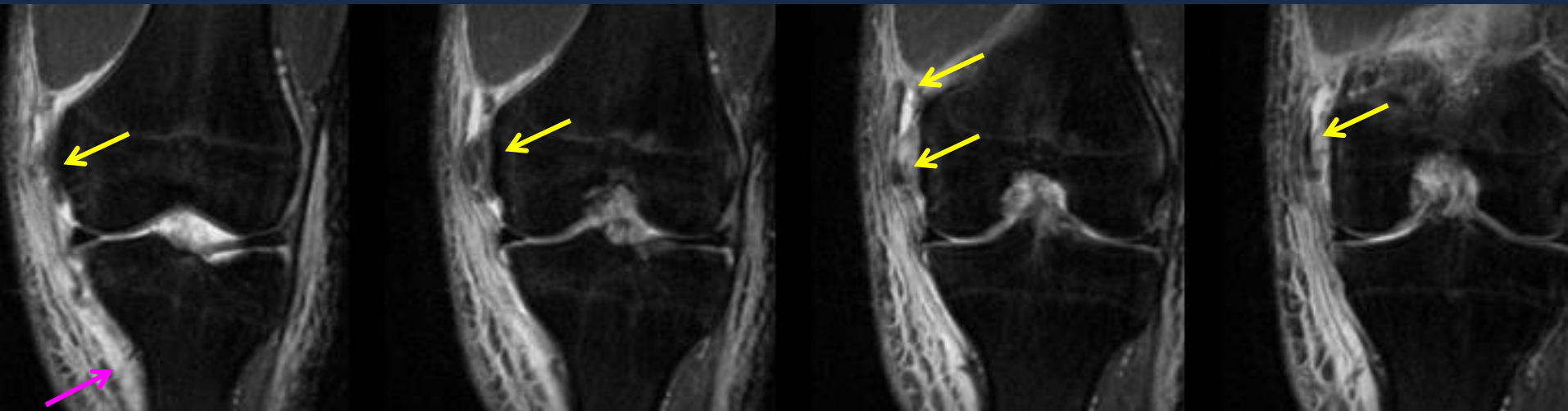
ANTERIOR

POSTERIOR



LATERAL

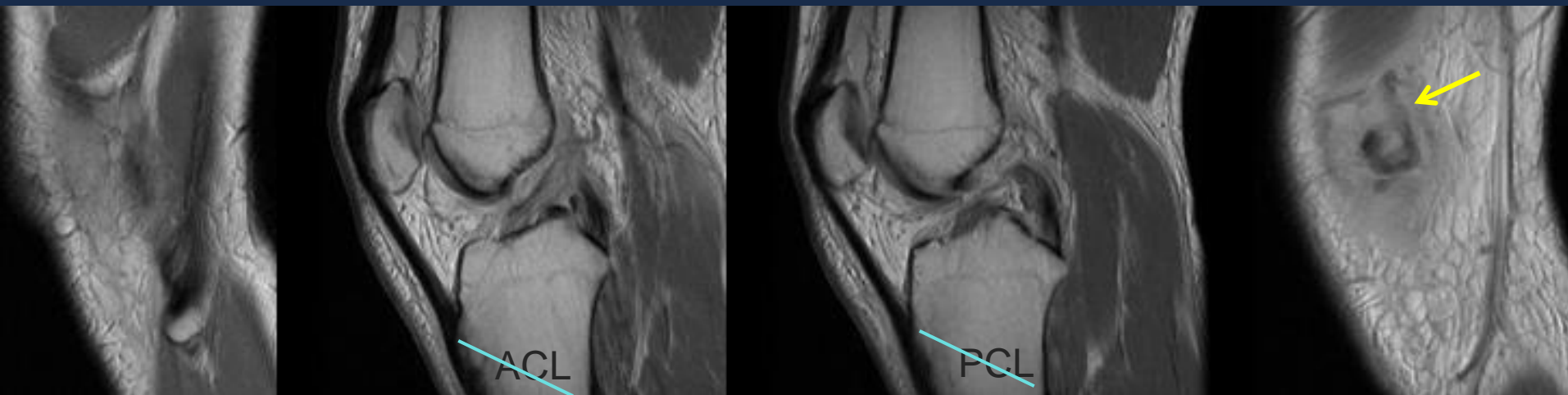
MEDIAL  
UC San Diego  
HEALTH SYSTEM



ANTERIOR



POSTERIOR

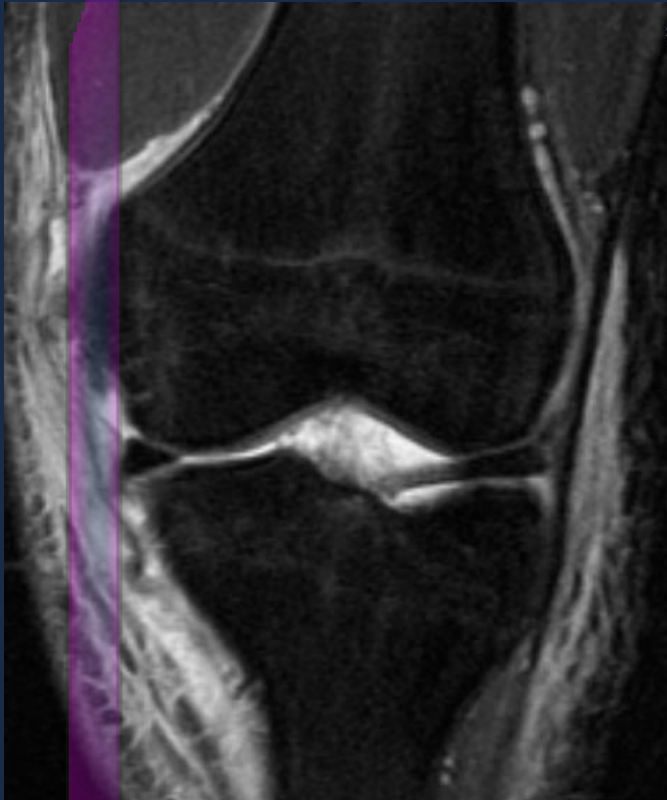


LATERAL

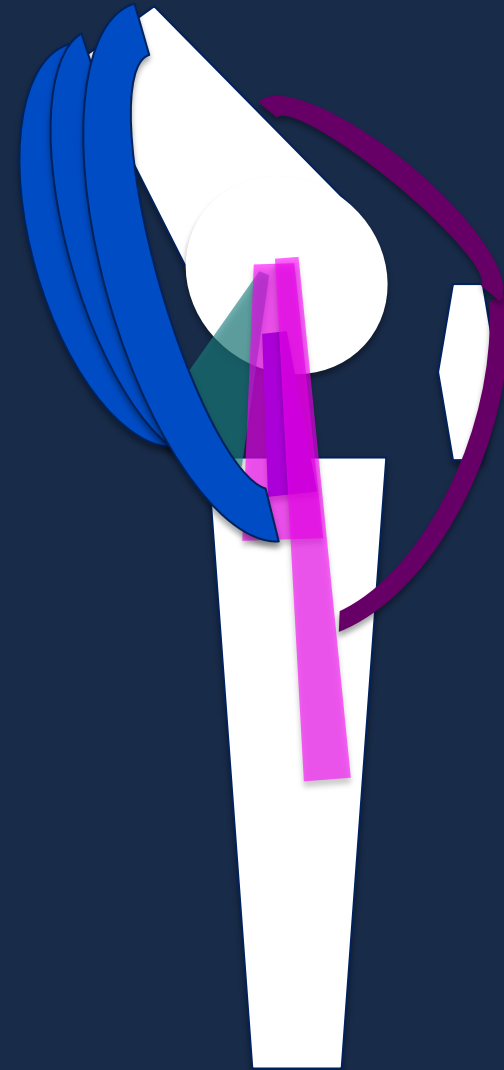
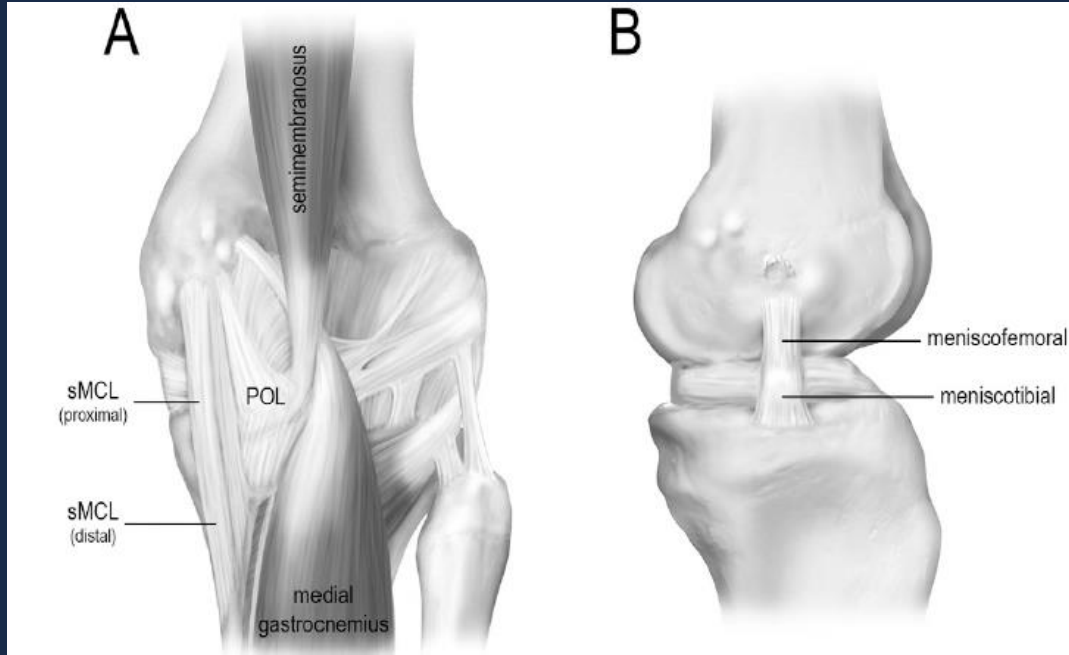


MEDIAL  
UC San Diego  
HEALTH SYSTEM

# ANOTHER SKATEBOARDING INJURY



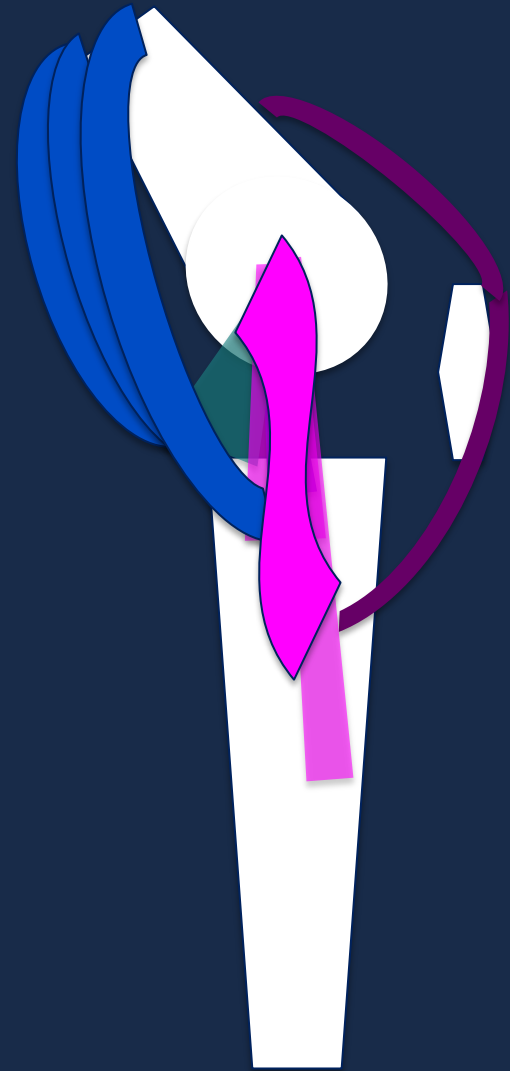
# Medial Supporting Structures



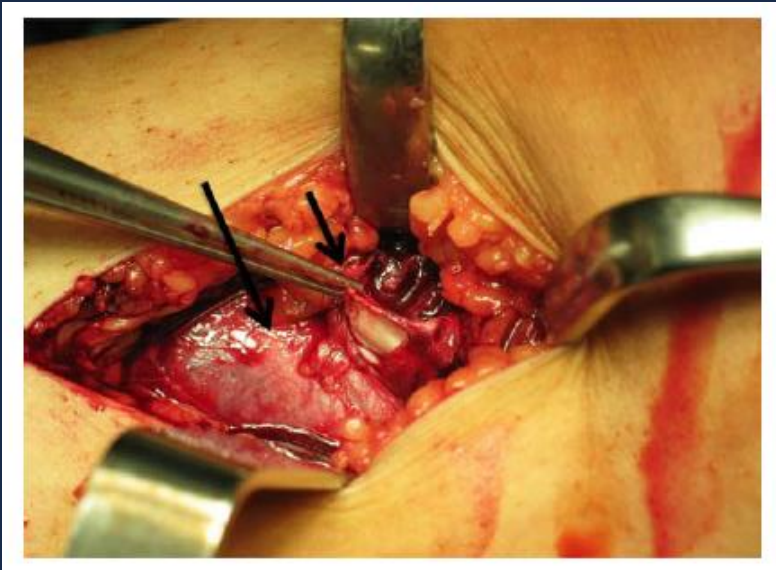
UC San Diego  
HEALTH SYSTEM

# Medial Supporting Structures

- Tear of the distal attachment of the superficial TCL can displace superficial to the pes anserinus → “Pseudo-Stener”
- Normally TCL very vascular and nonoperative management heals injury
- Pseudo-Stener prevents healing



# Three Cases: Ski Accidents



Above: Fitzcharles E, Ho CP. "Case Report: Distal Medial Collateral Ligament Tear of the Knee". *Clinical Orthopedic Imaging*. 2012; 3-5.

Left: Corten K, Hoser C, Fink C, Bellemans, J. "A Stener-like lesion of the medial collateral ligament of the knee". *Clinical Orthop. Relat. Res.* 2010; 468:289-293.