



Hormonal Implant Rod





Fig. 4: MRI SET1-weighted in coronal plane shows a hypointense, well-shaped structure (arrows) measuring 4 cm. compatible with an implant rod.

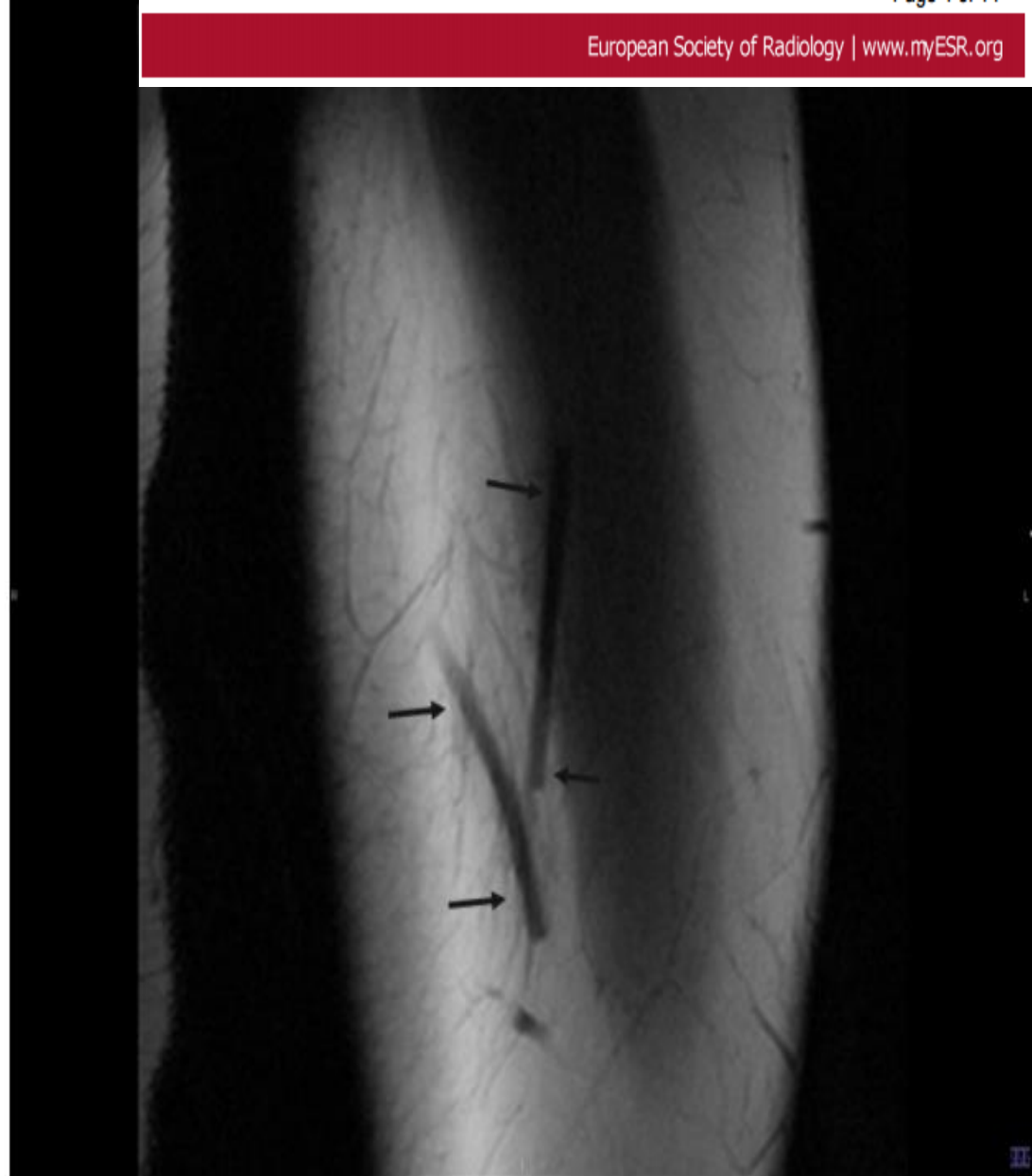


Fig. 6: MRI SET1-weighted image in coronal plane shows a hypointense, V-shaped tubular structures (arrows) measuring 4 cm. compatible with a Jadelle® subdermal implant.