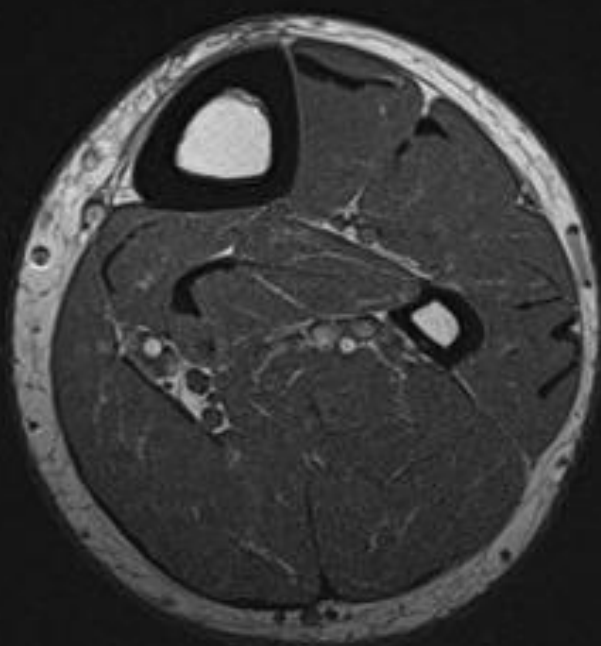


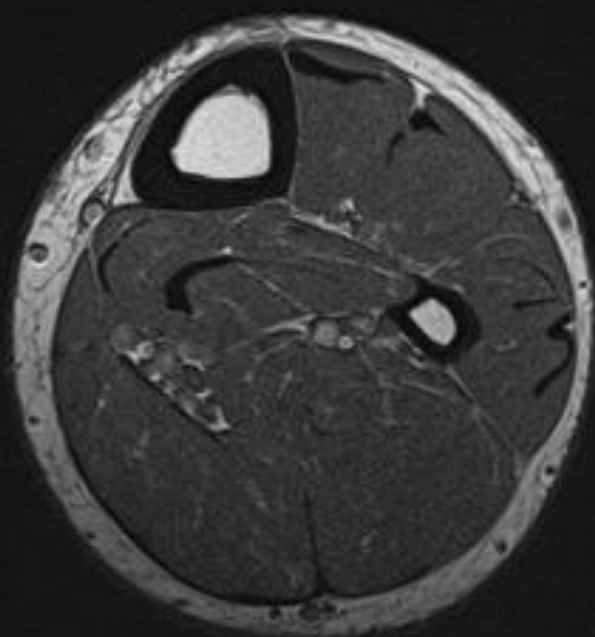


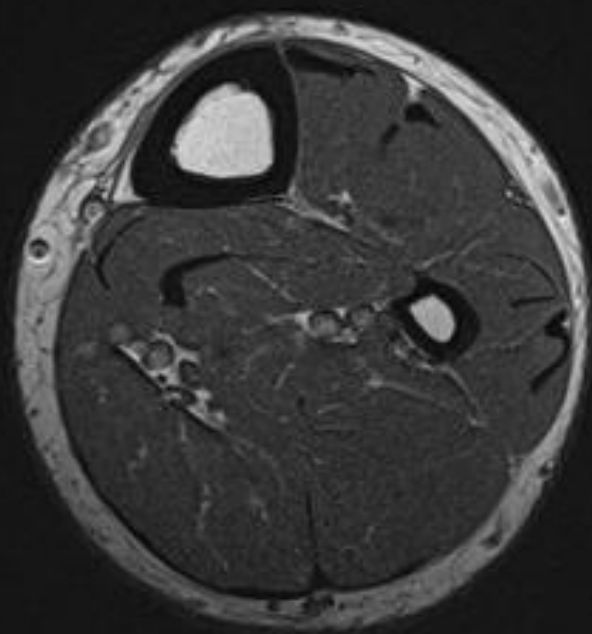
Left ankle pain, evaluate for Achilles tear or tendinopathy

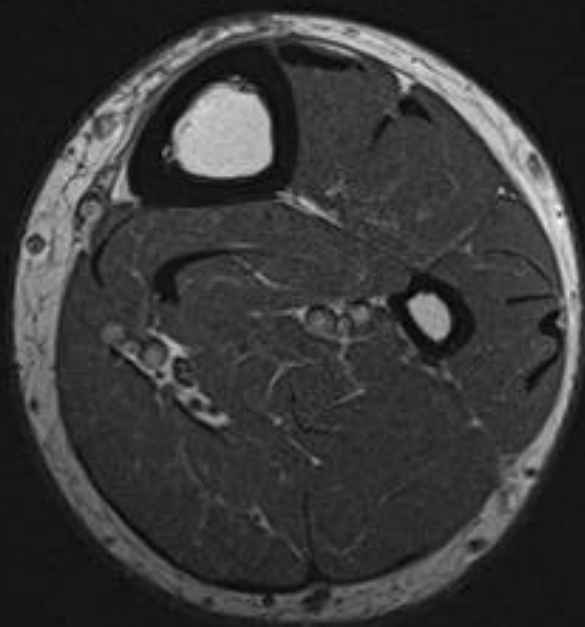
Thank you
Dr. Evelyne
Dr. Eman

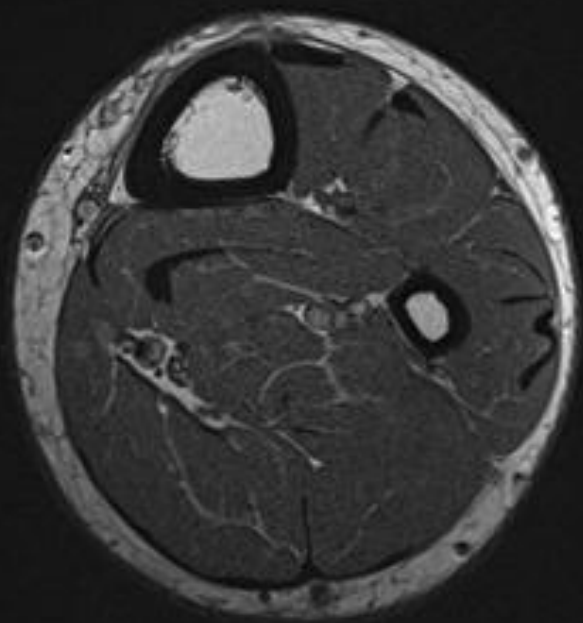
Praman
Visiting scholar

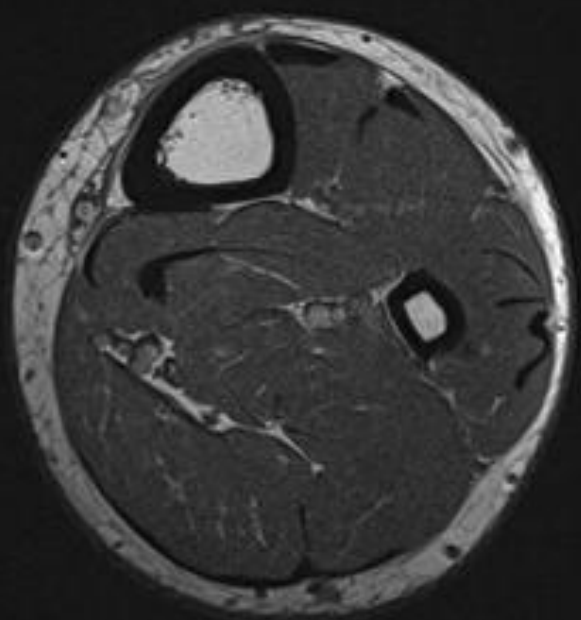


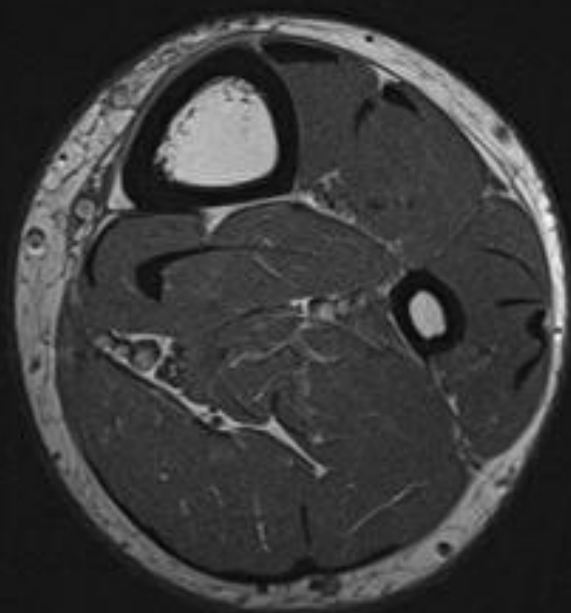


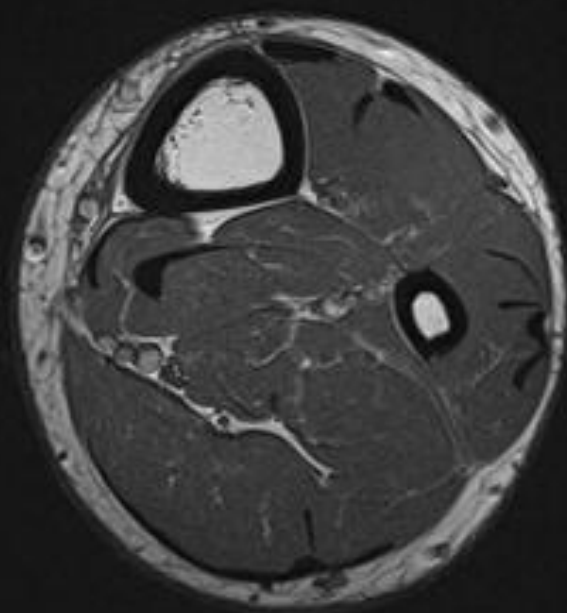


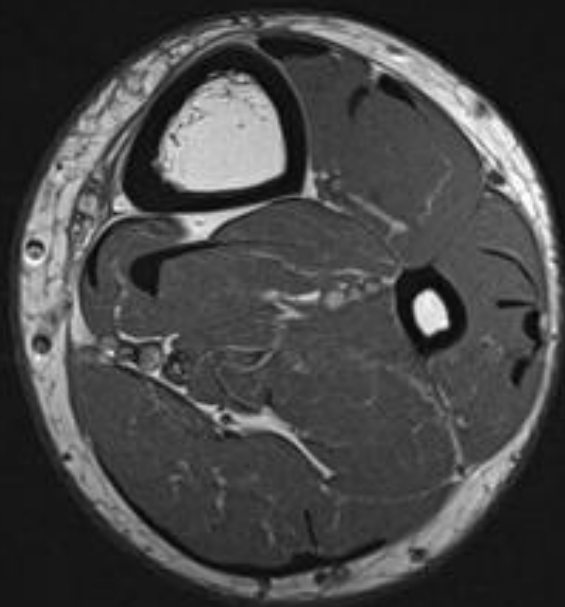


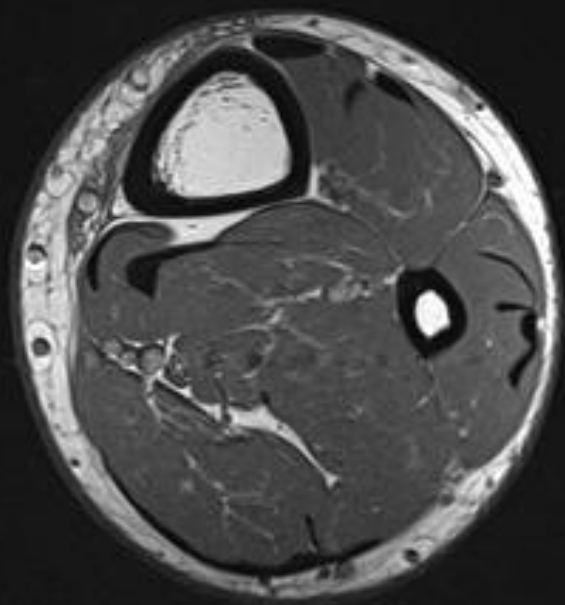


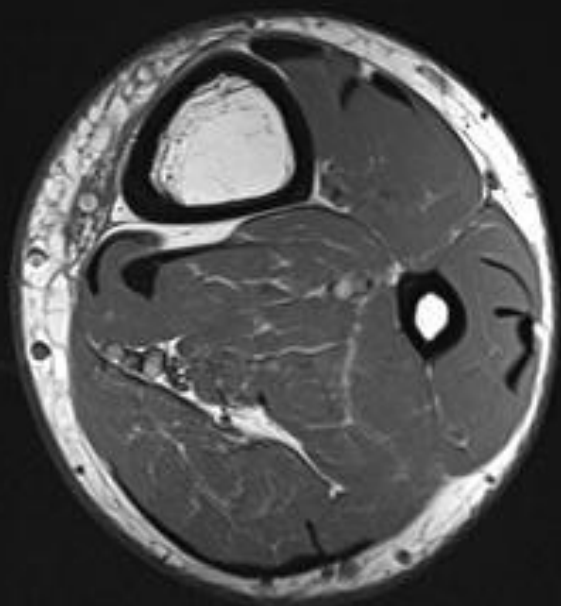


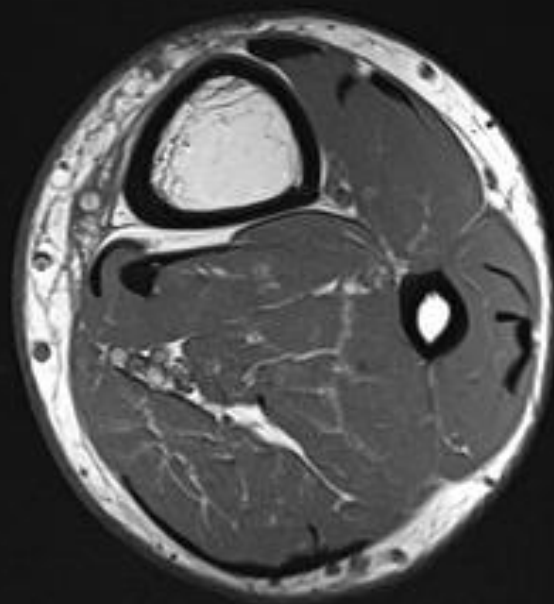


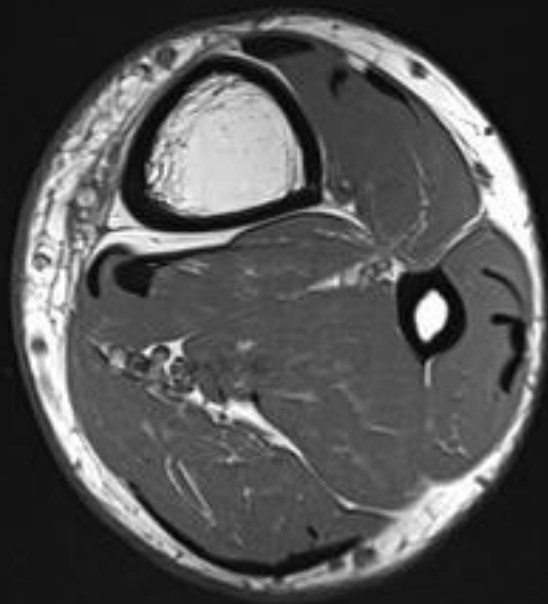


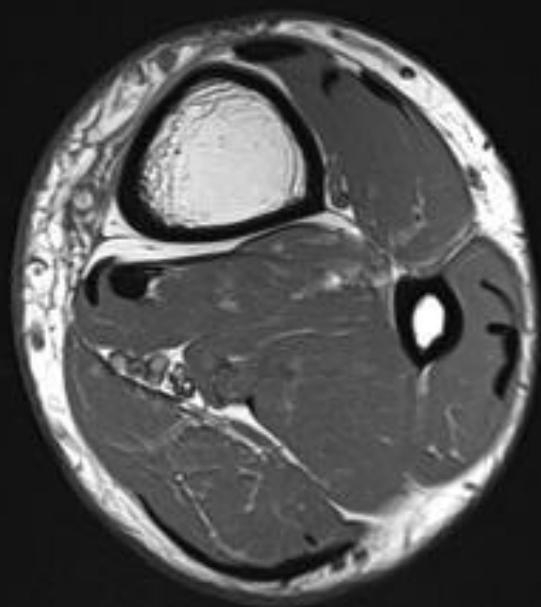


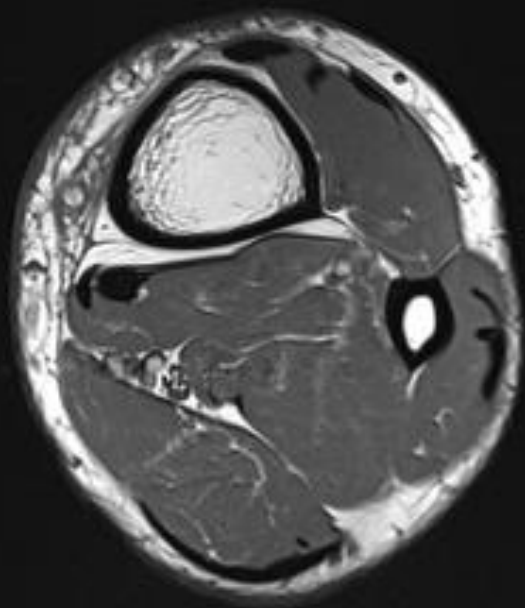


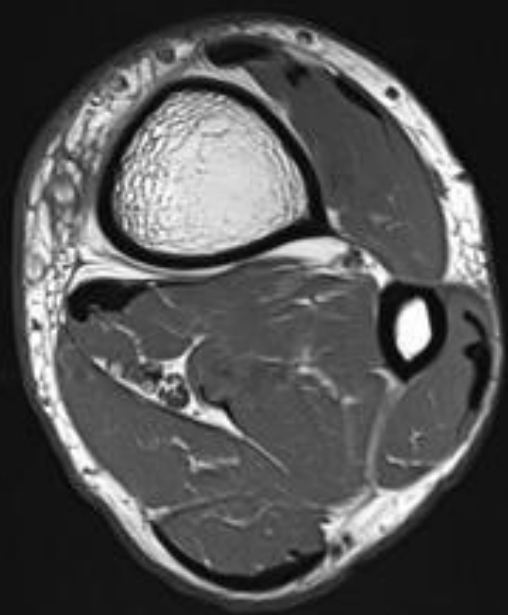


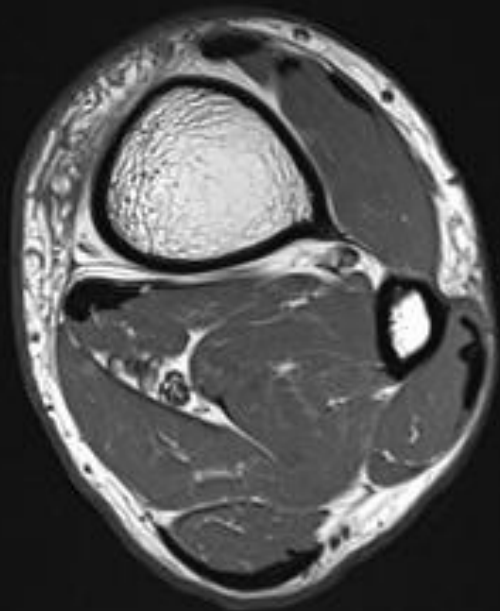


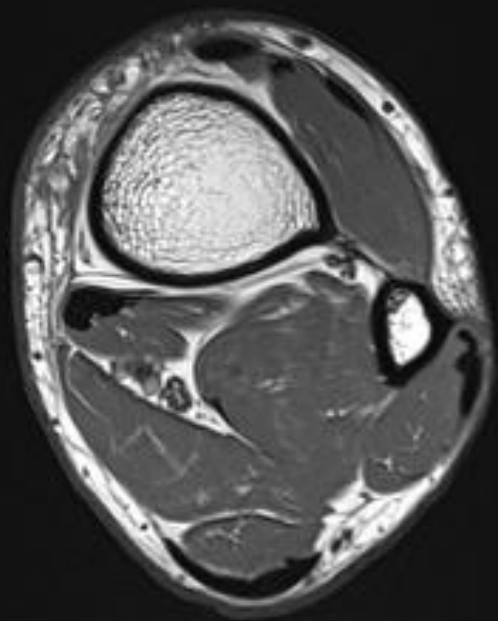


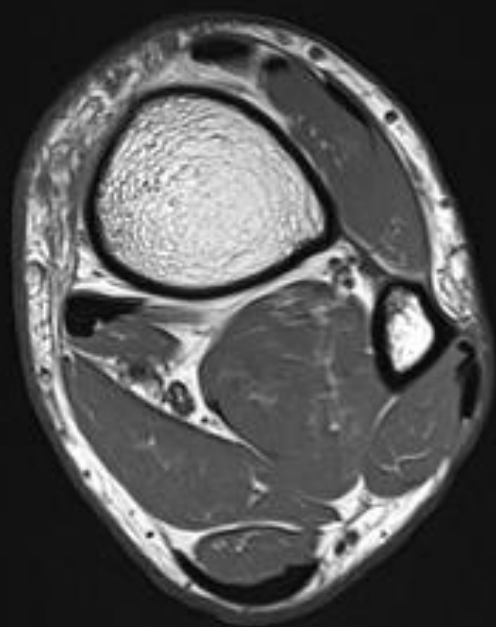


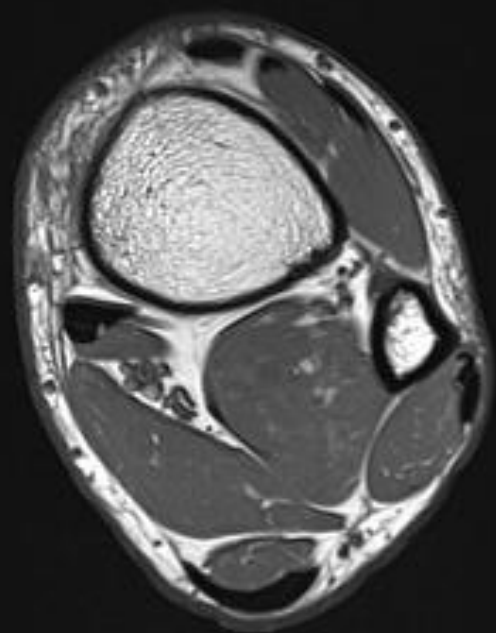


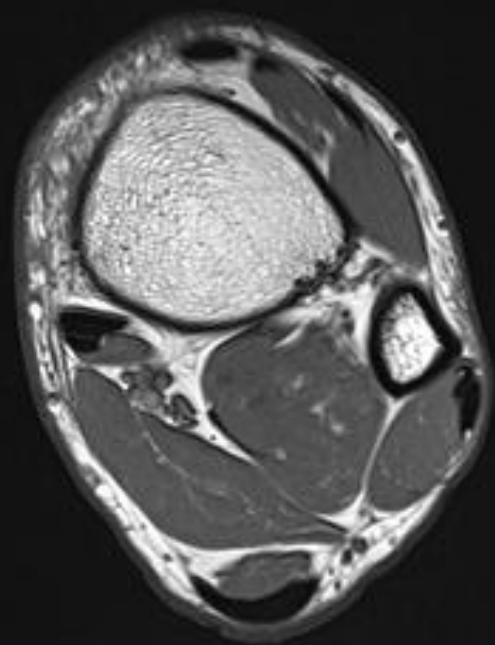


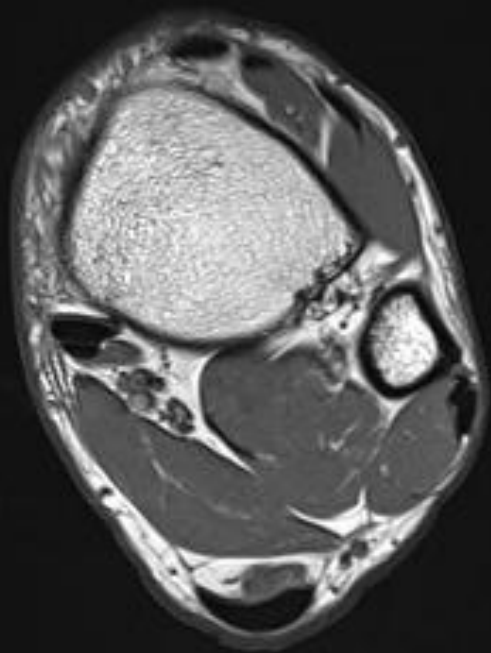


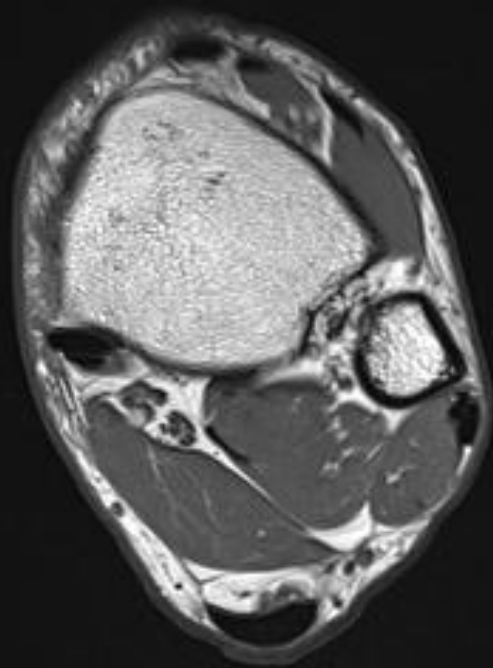


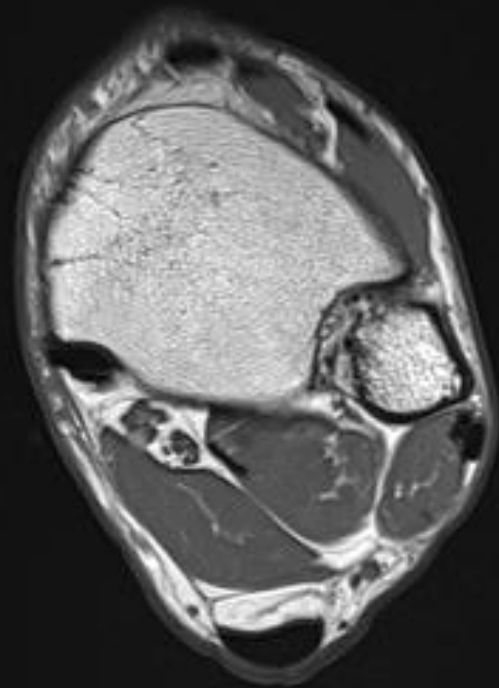


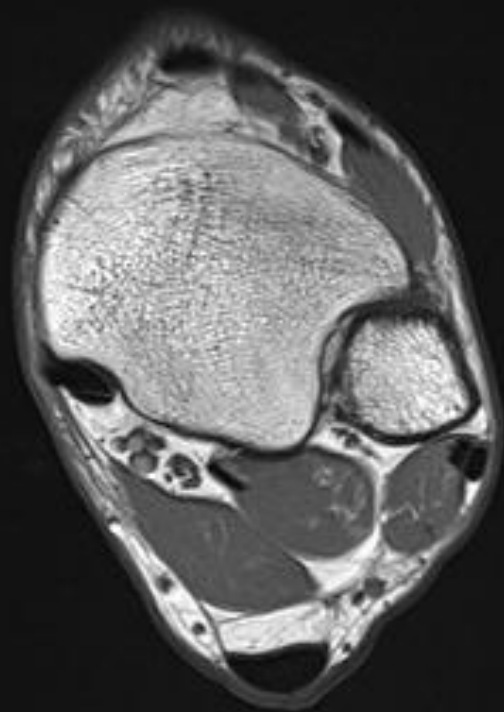


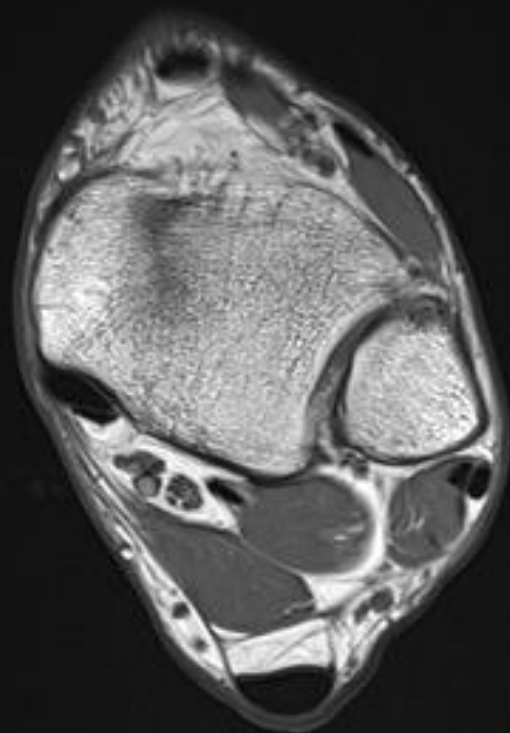


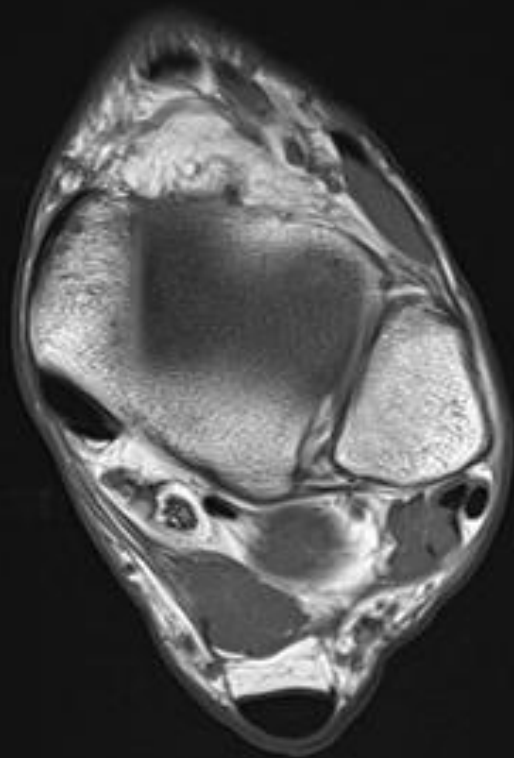


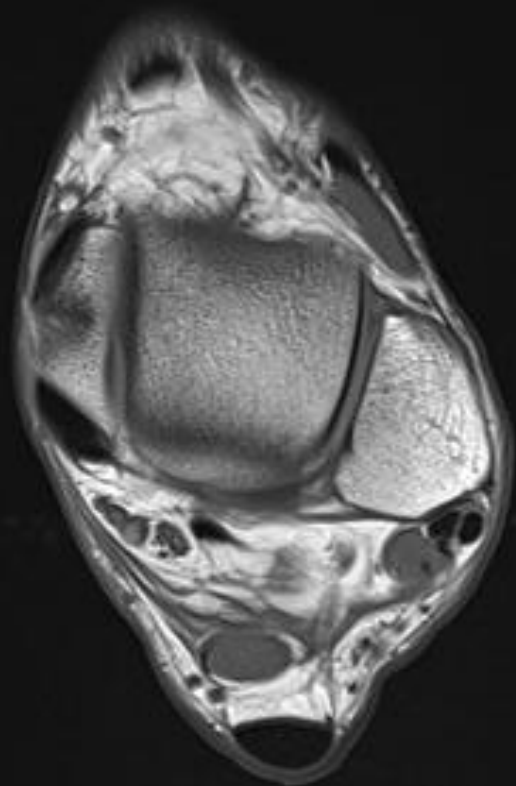


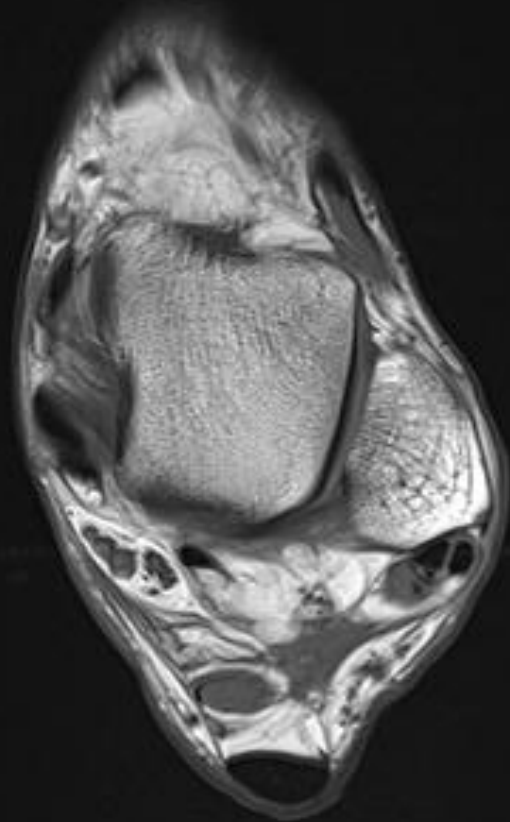


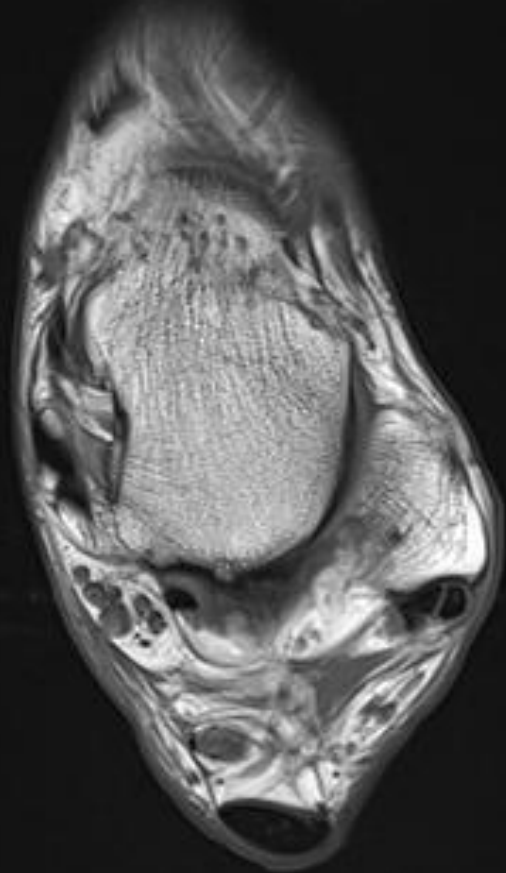


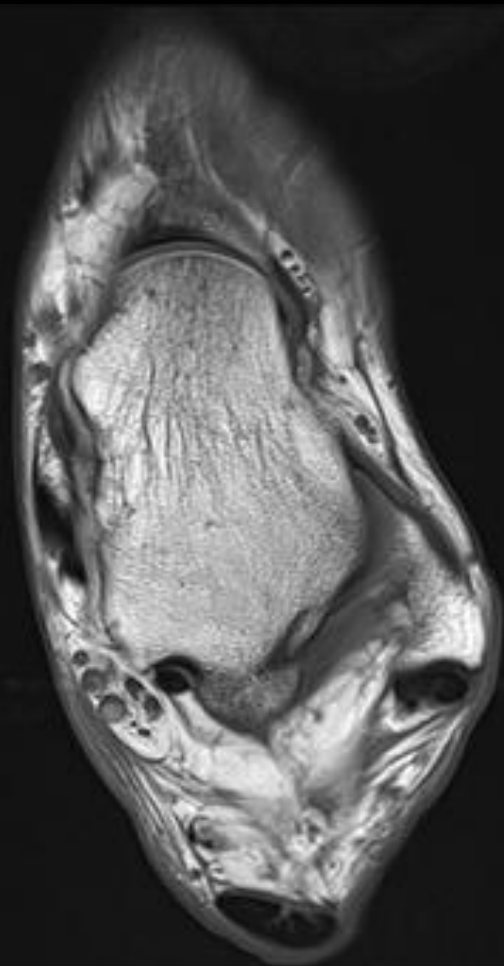


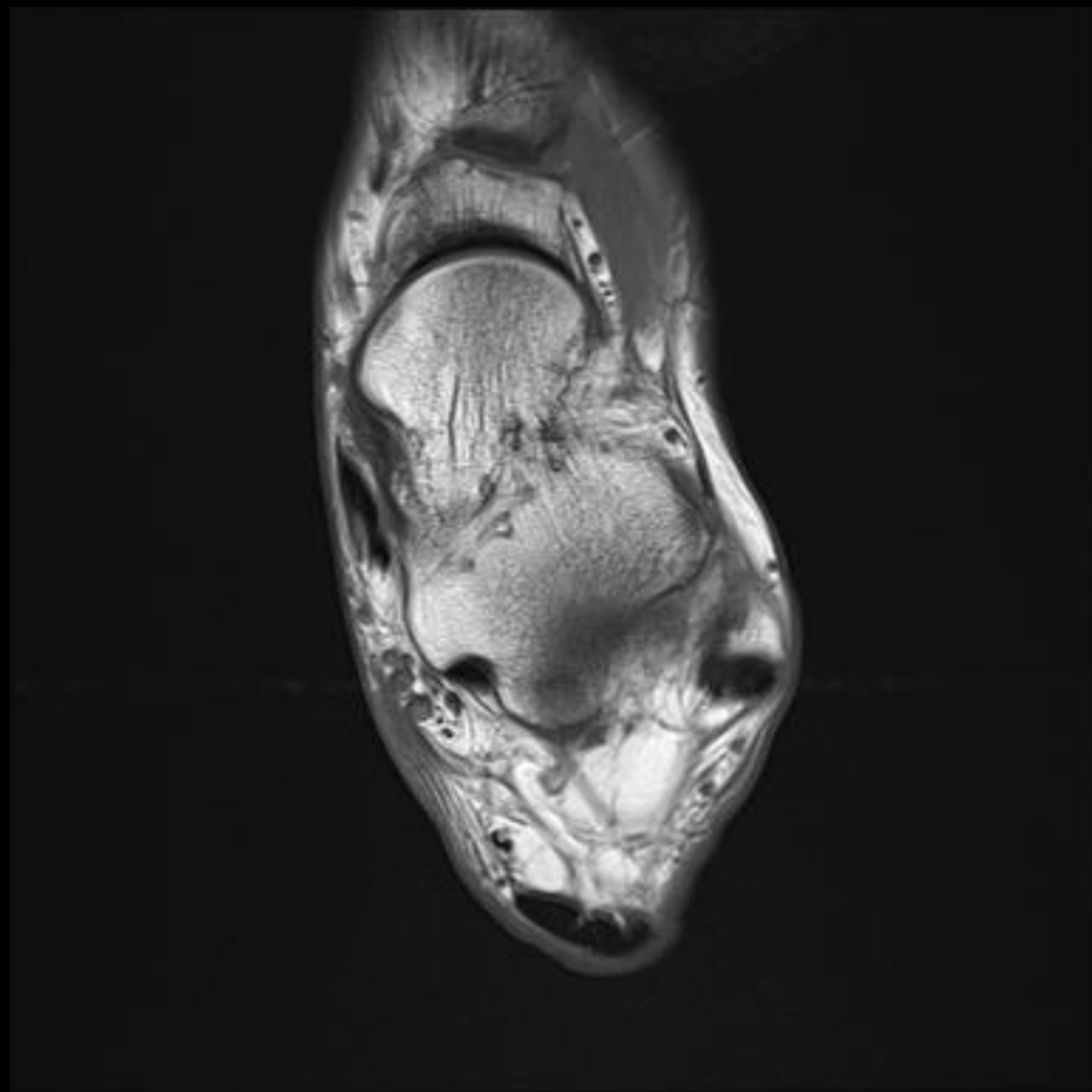


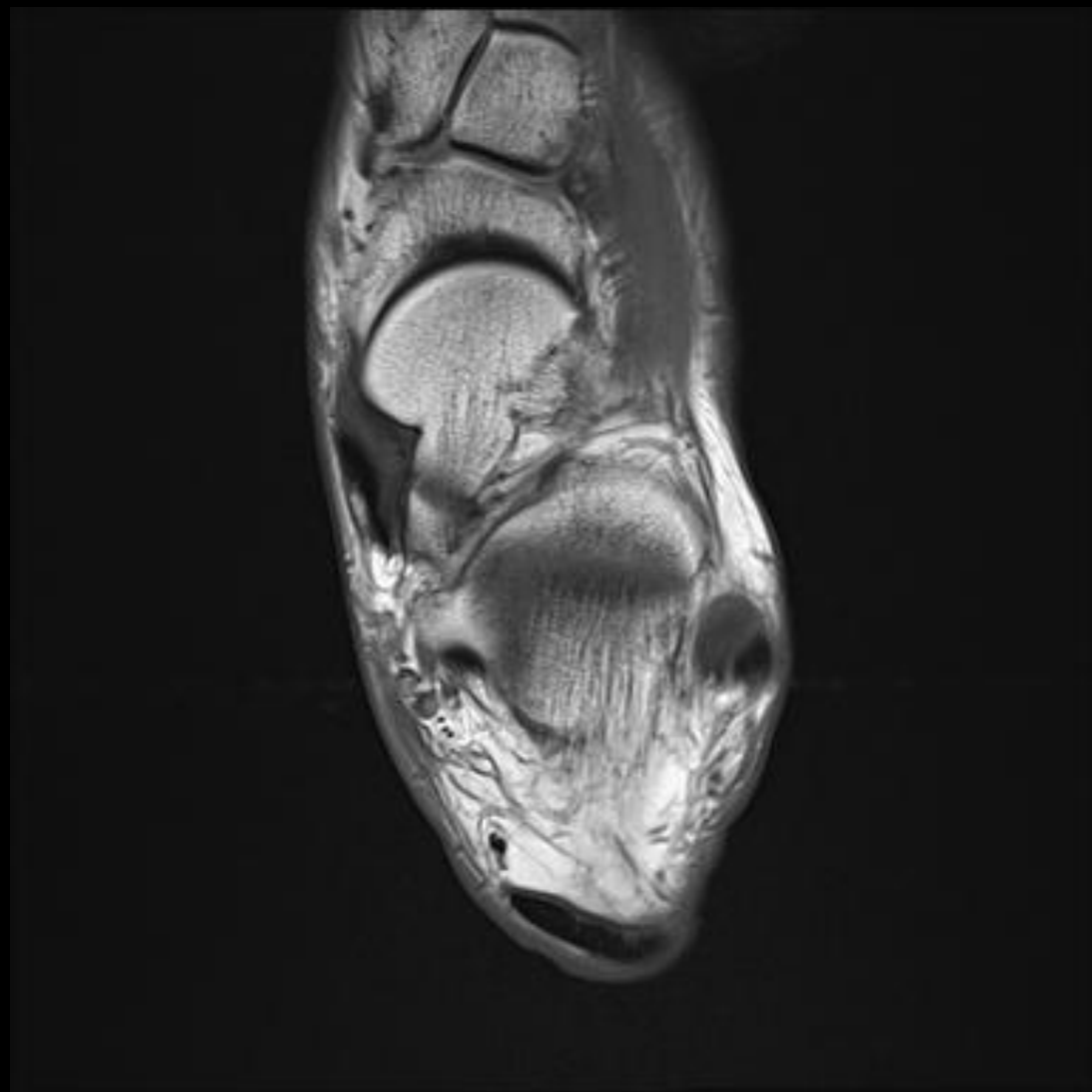












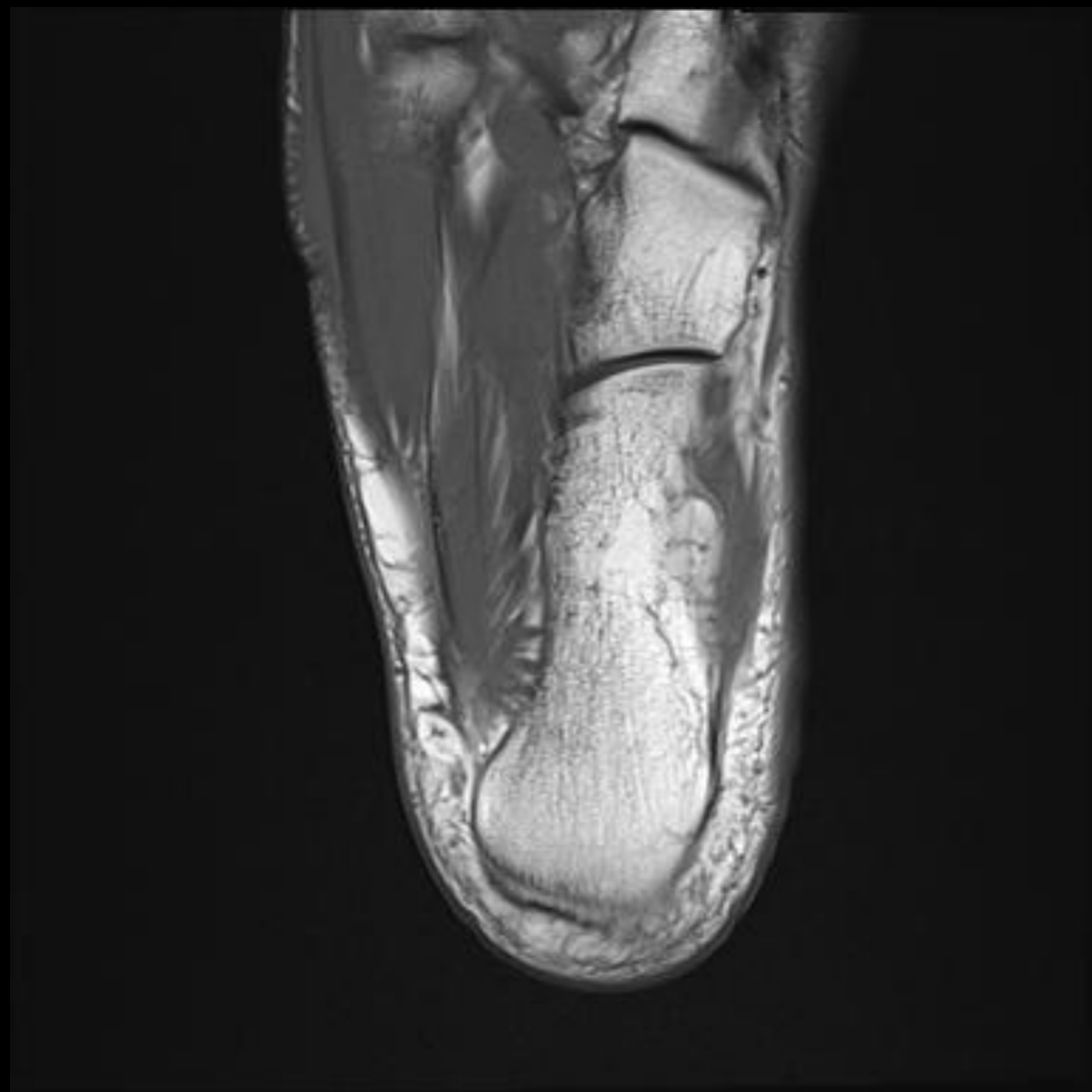


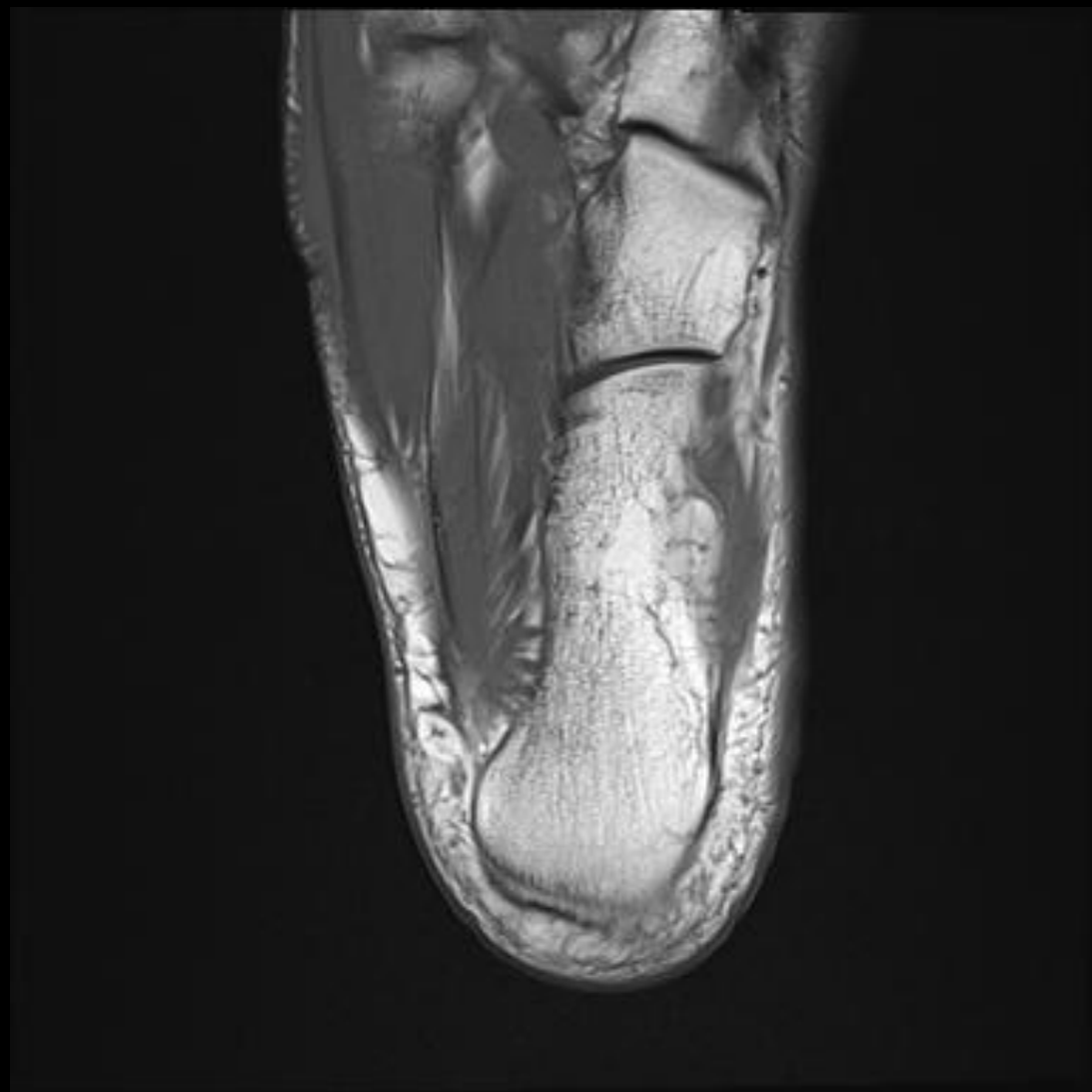


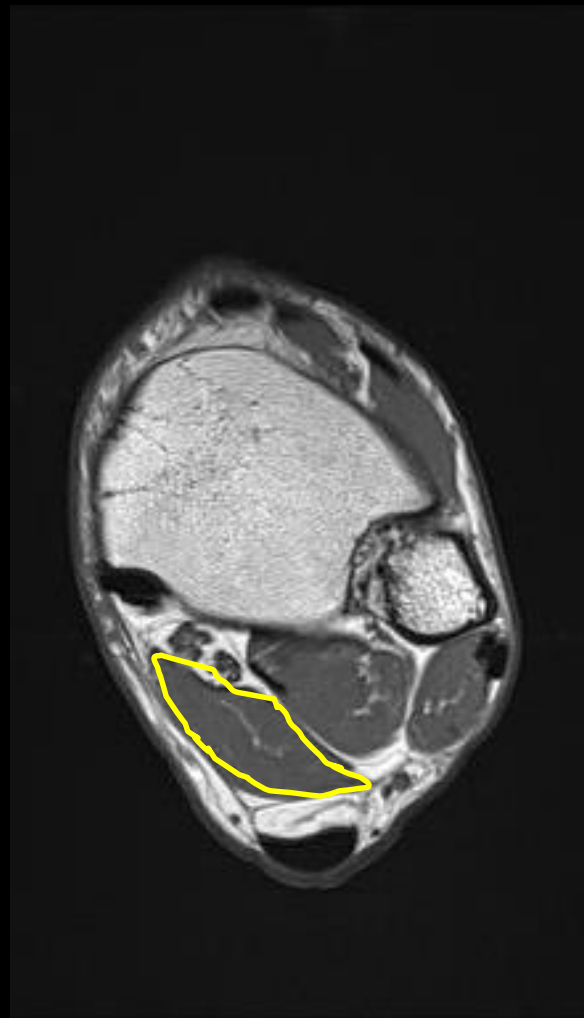
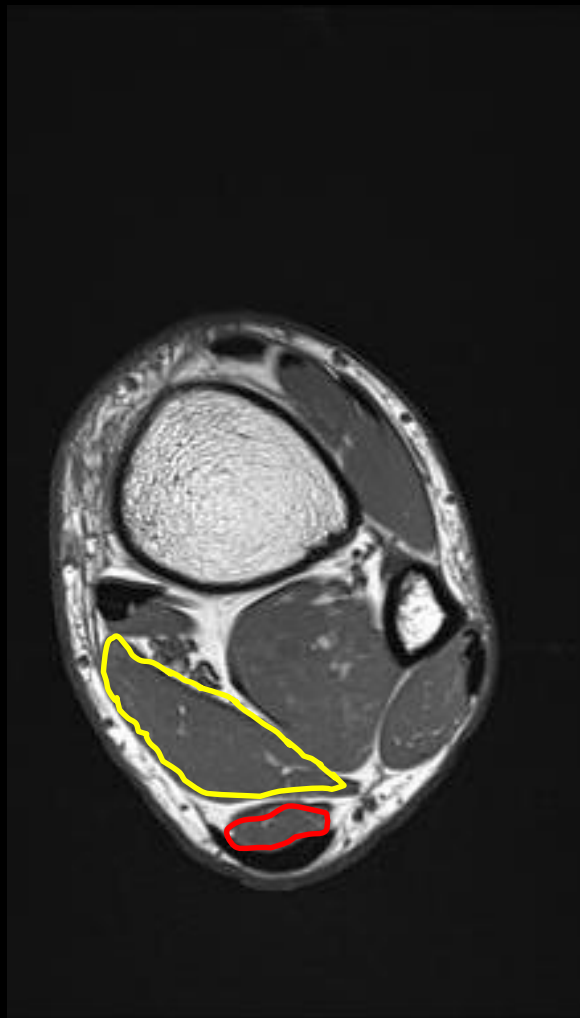
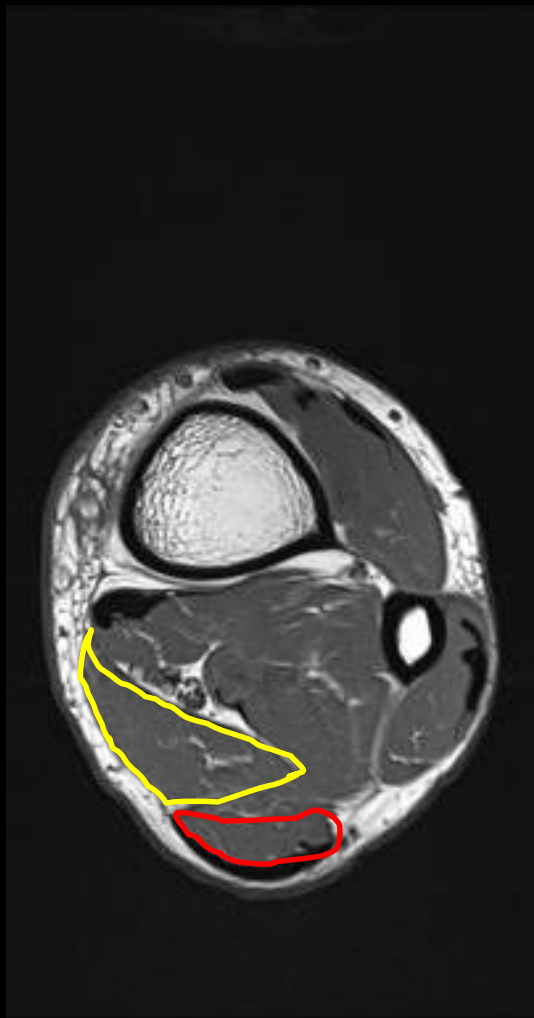


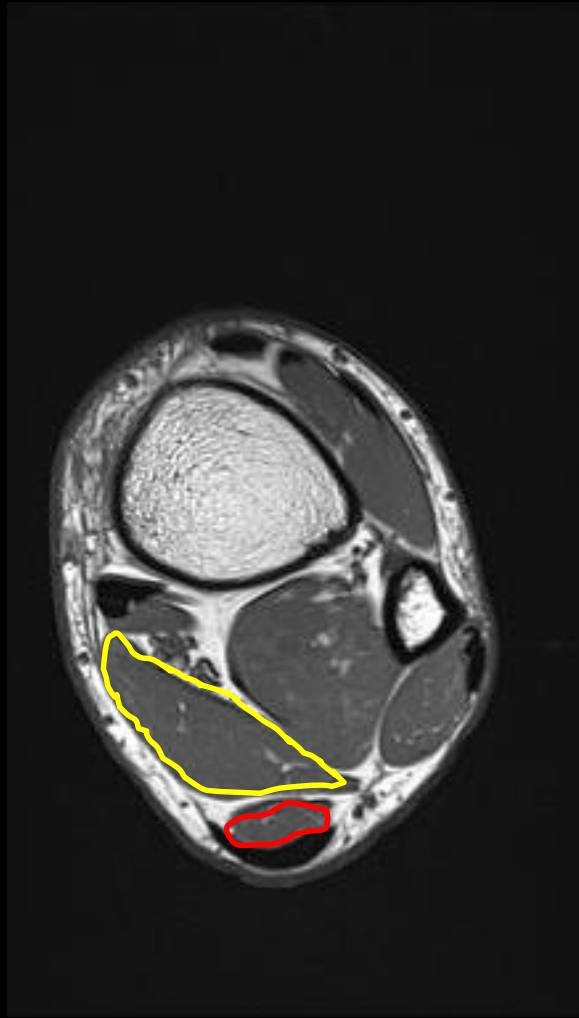
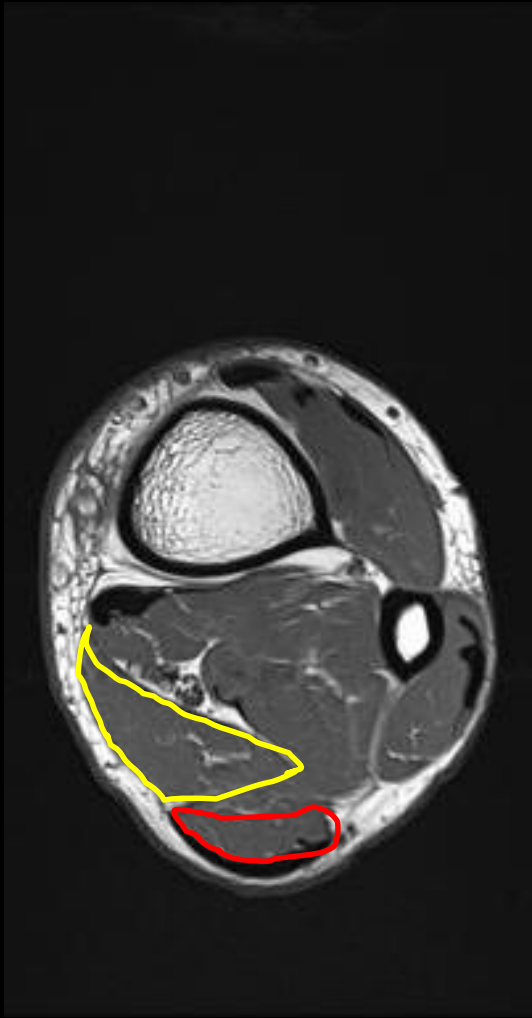






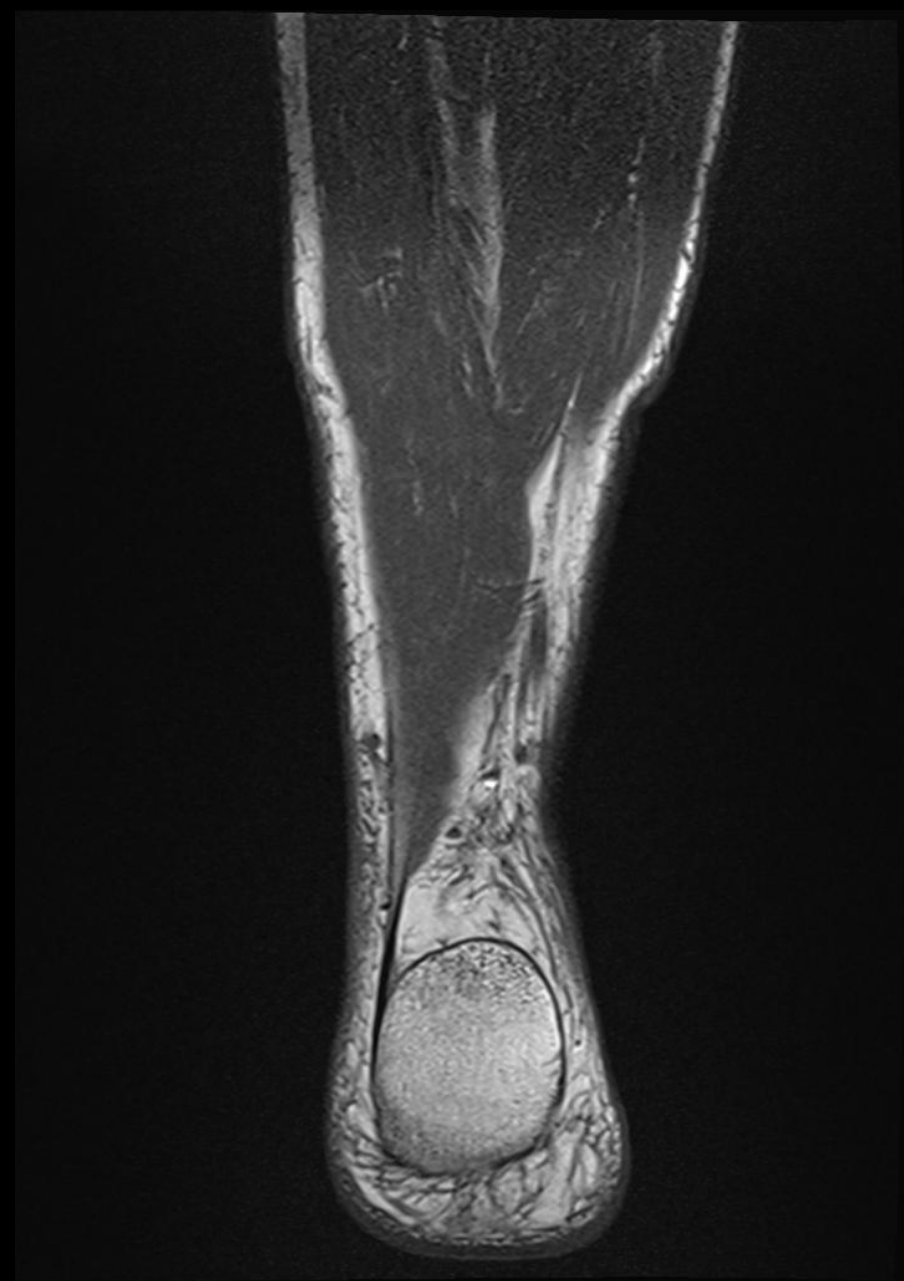


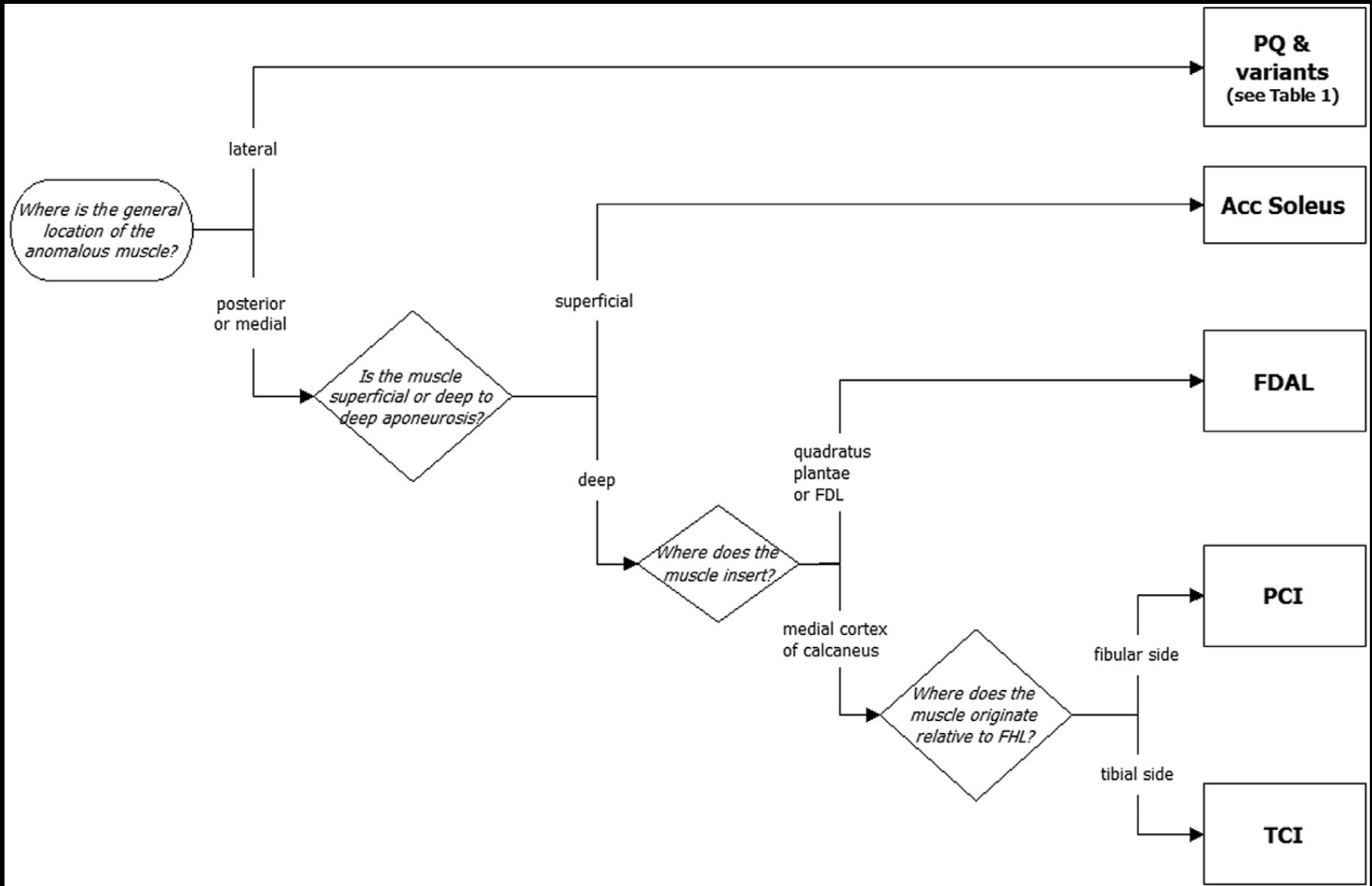


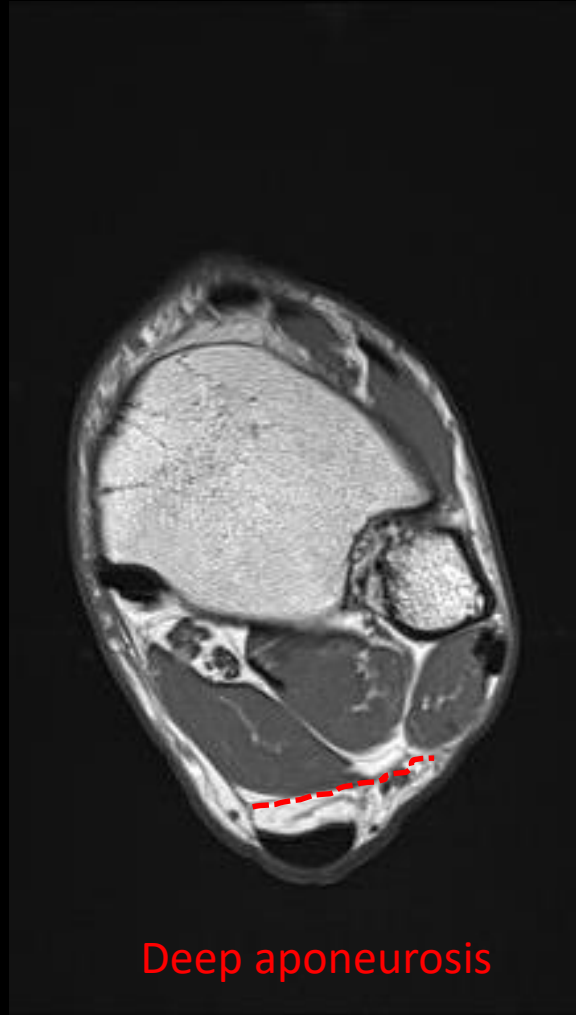
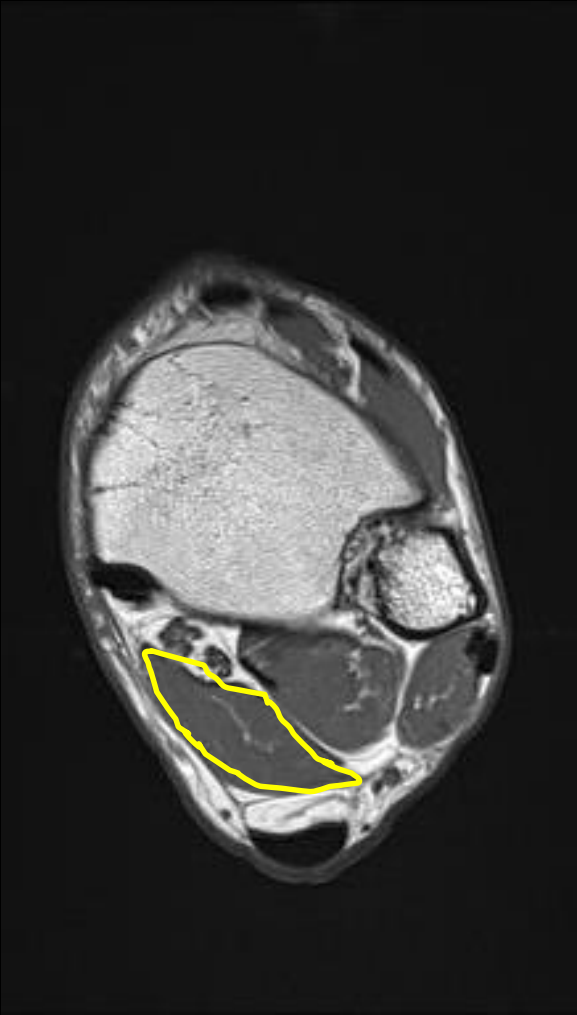


Accessory muscle

Soleus







Deep aponeurosis

TCI = Tibiocalcaneus internus

Accessory soleus muscle

- Prevalence of 0.7% to 5.5% in cadavaric studies
- Innervated by the posterior tibial nerve
- Blood supply via the posterior tibial artery

Accessory soleus muscle

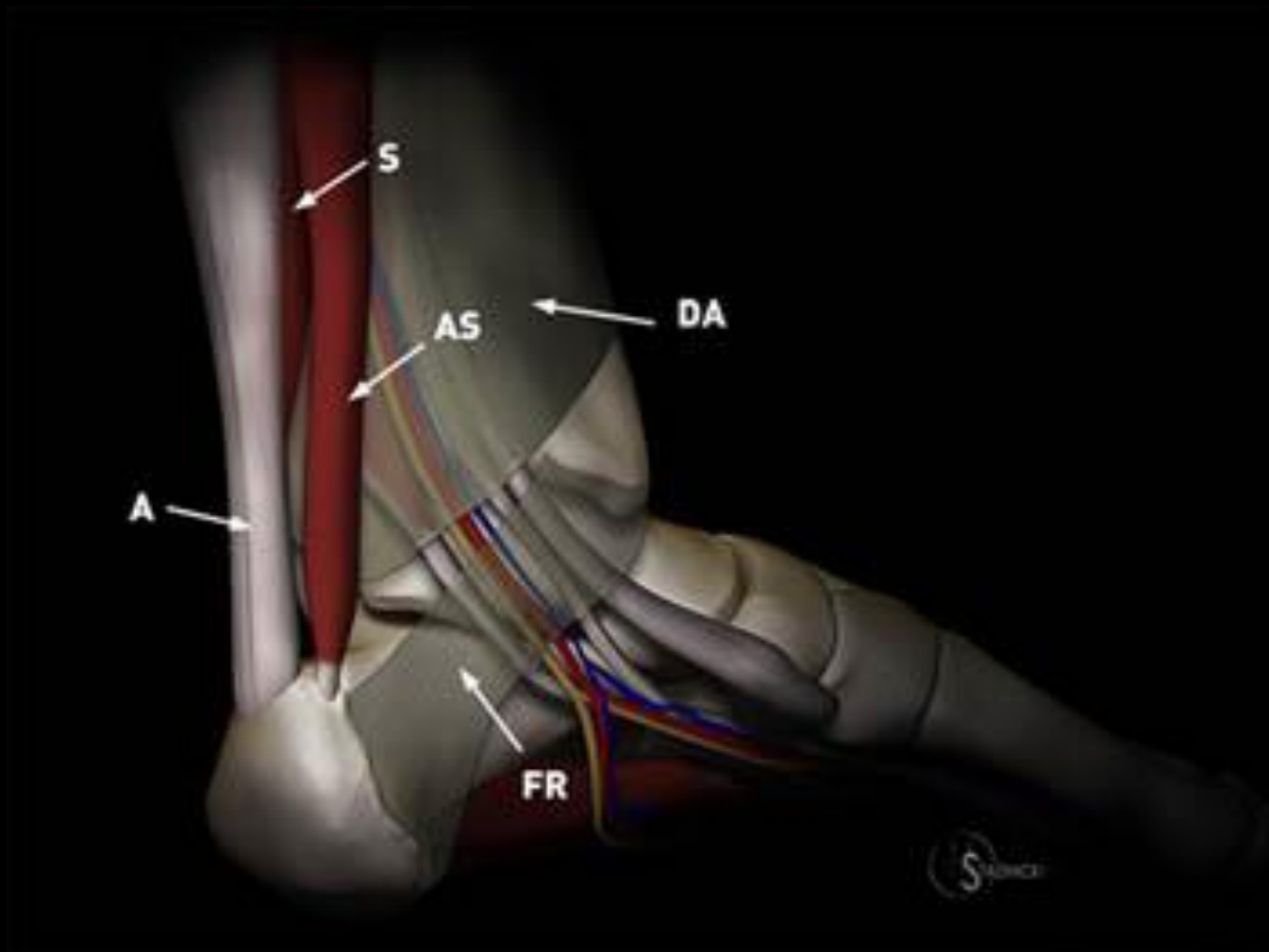
- Arises from the anterior (deep) surface of the soleus or from the fibula and soleal line of the tibia
- Descends anterior or anteromedial to the Achilles tendon

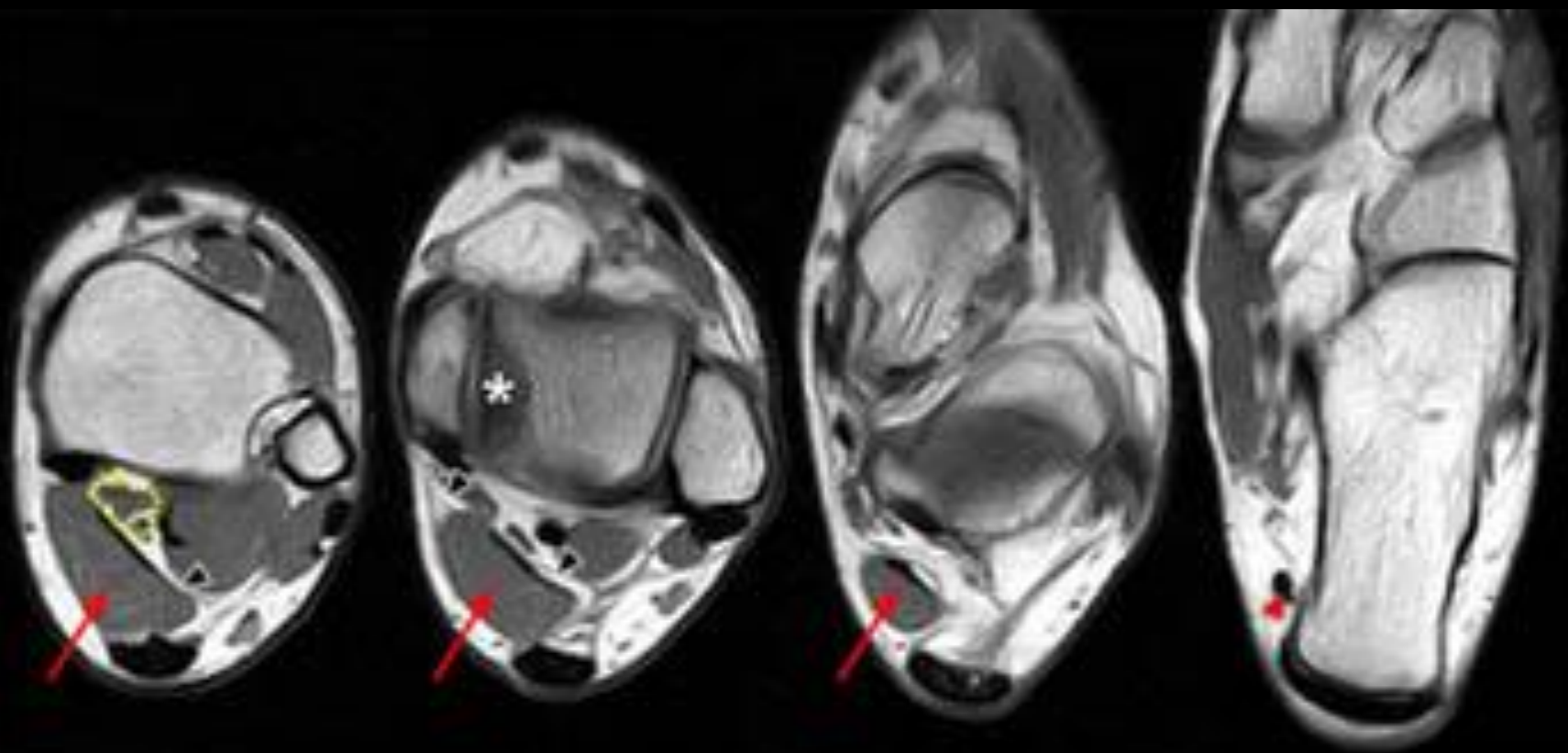
Accessory soleus muscle

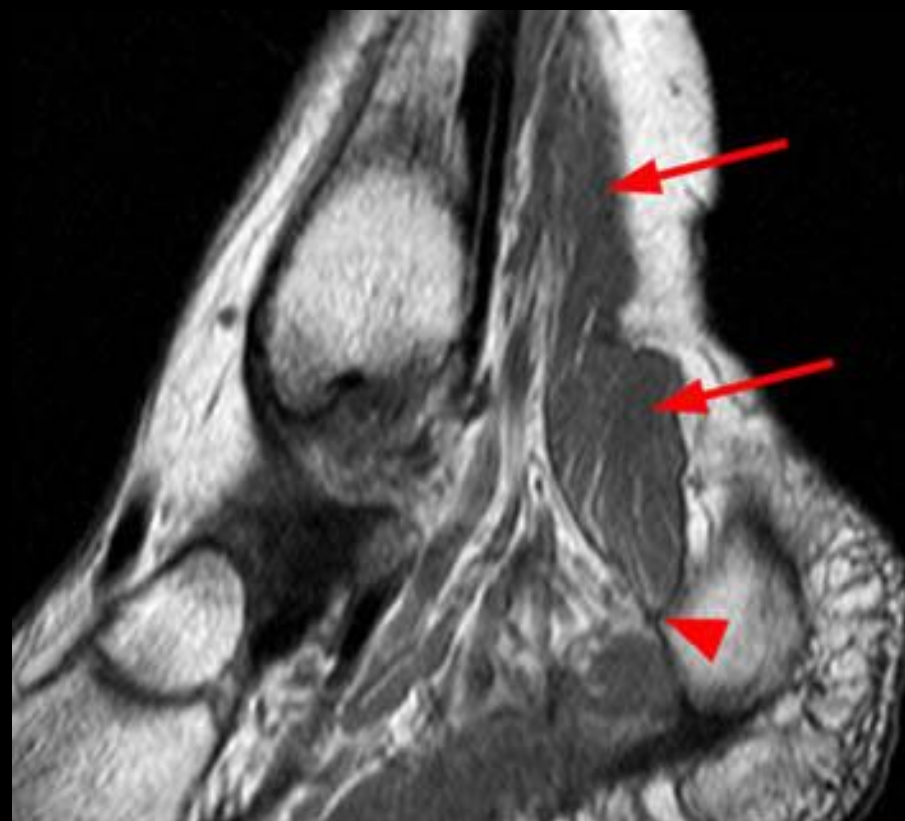
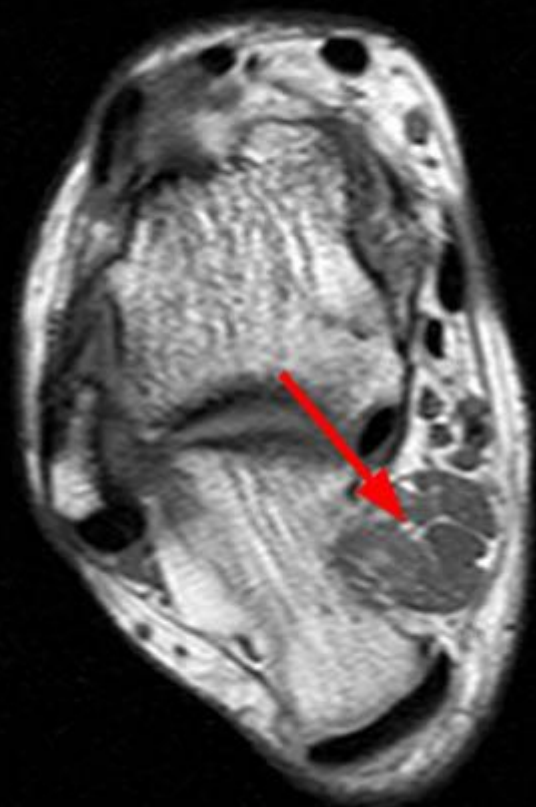
- Five types of accessory soleus on the basis of insertion characteristics
 - Achilles tendon
 - Upper surface of the calcaneus with a fleshy muscular insertion
 - Superior surface of the calcaneus with a tendinous insertion
 - Medial aspect of the calcaneus with a fleshy muscular insertion
 - Medial aspect of the calcaneus with a tendinous insertion

Signs and symptoms

- Painless mass
- Painful mass
- Localized compartment syndrome
- Hindfoot and clubfoot deformities.







Treatment in symptomatic cases

- Fasciotomy
- Tendon release
- Excision
- Debulking

References

- Sookur PA, Naraghi AM, Bleakney RR, Jalan R, Chan O, White LM. Accessory muscles: anatomy, symptoms, and radiologic evaluation. *RadioGraphics* 2008; 28:481-499.
- Yu JS, Resnick D. MR imaging of the accessory soleus muscle appearance in six patients and a review of the literature. *Skeletal Radiol* 1994; 23:525-8
- Christodoulou A, Terzidis I, Natsis K, et al . Soleus accessorius, an anomalous muscle in a young athlete: case report and analysis of the literature. *British Journal of Sports Medicine* 2004;**38**:e38.
- Brodie JT, Dormans JP, Gregg JR, Davidson RS. Accessory soleus muscle. A report of 4 cases and review of literature. *Clin Orthop* 1997;337:180-186.
- Gyftopoulos, Soterios et al. Normal Variants and Pitfalls in MR Imaging of the Ankle and Foot. *Magnetic Resonance Imaging Clinics* , Volume 18 , Issue 4 , 691 - 705